



**Project: MOE – FLS Reference
Designs for Standard Classroom
Upgrade – Canterbury Block**

Accessibility Report

Reference: 246313

Prepared for: Ministry of
Education

Revision: B

29 October 2015

Document Control Record

Document prepared by:



Aurecon New Zealand Limited
 Level 1, 102 Customhouse Quay
 Wellington 6011
 PO Box 1591
 Wellington 6140
 New Zealand

T +64 4 472 9589
F +64 4 472 9922
E wellington@aurecongroup.com
W aurecongroup.com

A person using Aurecon documents or data accepts the risk of:

- a) Using the documents or data in electronic form without requesting and checking them for accuracy against the original hard copy version.
- b) Using the documents or data for any purpose not agreed to in writing by Aurecon.

Document control				aurecon		
Report Title		Accessibility Report				
Document ID		Rev A	Project Number		246313	
File Path		\\aurecon.info\shares\NZWLG\Projects\246313\03 Project Delivery\Reports\Accessibility\Canterbury\246313 - Canterbury Block FLS_Accessibility Report_Rev B.docx				
Client		Ministry of Education	Client Contact			
Rev	Date	Revision Details/Status	Prepared by	Author	Verifier	Approver
A	15 September 2015	For information	F Wee	F Wee	T Gazley	J Martins
B	29 October 2015	For information	F Wee	F Wee	T Gazley	J Martins
Current Revision		B				

Approval					
Author Signature			Approver Signature		
Name		Franky Wee (BBSc)	Name		Jack Martins
Title		Fire Engineer	Title		Technical Director (Buildings)



Contents

1. Introduction	2
2. Proposed Building Work	3
2.1 Drawings and Specifications	3
2.2 Canterbury Block- Four-classroom Type	3
3. Accessible Car Parks	5
4. Accessible Routes	6
4.1 Access- General	6
4.2 Footpaths and Ramps	6
4.3 Building Entry	7
4.4 Stairways and Lifts	7
4.5 Doorways and Openings on Accessible Routes	7
4.6 Signs	7
5. Toilet Facilities	8
6. Public Facilities	8
6.1 Public Counter and Desks	8
6.2 Telephone	8
7. Outdoor Public Areas	8
8. Conclusion	8

1. Introduction

This report considers the accessibility requirements of standard single-storey four-classroom Canterbury Type classroom block at various Ministry of Education (MOE) schools throughout New Zealand. The proposed work is to upgrade the existing standard four-classroom Canterbury Block to become a “Flexible Learning Space (FLS)”, previously referred to as “Modern Learning Environment (MLE)”. Three options of similar layout have been considered for the Canterbury Block FLS upgrade - options 1, 2 and 3.

Option 1 consists of four interconnected classrooms equivalent in size with two breakout rooms and two toilet and bag storage areas.

Option 2 also consists of four interconnected classrooms equivalent in size but with two breakout rooms, two toilets and a resource room.

Option 3 also consists of four interconnected classrooms equivalent in size but with three breakout rooms and a toilet.

The proposed works are therefore alterations in terms of Section 112 of Building Act 2004. This states that:

112 Alterations to existing buildings

A building consent authority must not grant a building consent for the alteration of an existing building, or part of an existing building, unless the building consent authority is satisfied that, after the alteration, the building will -

- (a) comply, as nearly as is reasonably practicable with the provisions of the building code that relate to-
 - i. means of escape from fire; and
 - ii. access and facilities for persons with disabilities (if this is a requirement in terms of section 118); and
- (b) continue to comply with the other provisions of the building code to at least the same extent as before the alteration.

The Building Act: 2004 requires in section 4 (2) (k) for 'the need to provide, both to and within buildings to which section 118 applies, facilities that ensure that reasonable and adequate provision is made for people with disabilities to enter and carry out normal activities and processes in a building '.

Section 118 of the Building Act requires that access and facilities for persons with disabilities to and within buildings be considered for facilities to which the public are to be admitted, whether for free or on payment of a charge ... This includes educational institutions, including public and private primary, intermediate, and secondary schools, universities, polytechnics, and other tertiary institutions.

To demonstrate compliance with the above this report makes use of the Acceptable Solutions in the New Zealand Building Code Clause D1/AS 1, NZS 4121:2001 Design for Access and Mobility Buildings and Facilities.

Note that this report considers only those requirements necessary for the standard four-classroom Canterbury Type classroom block themselves to comply with accessibility requirements. Because each school where Canterbury Blocks are existing will have different configurations of site layout, vehicle and pedestrian access, building usage etc. a generic and comprehensive accessibility report is not possible. Therefore any particular school with Canterbury Blocks present would need a site specific accessibility report that would consider all the necessary requirements for access by people with disabilities. Site specific items have been identified in the report and denoted as such in this report.

Note also that the requirements of this report may not be applicable to those Canterbury Blocks where the school can provide equivalent teaching facilities elsewhere on site for staff and / or students with disabilities.

2. Proposed Building Work

2.1 Drawings and Specifications

This report is based on drawings by Brewer Davidson Architects Ltd.

Table 1: Reviewed drawings

Drawing Title	Drawing No.	Rev.	Date
Canterbury Block MLE Upgrade Option 1	1501-C004	C	27/07/2015
Canterbury Block MLE Upgrade Option 2	1501-C003	B	27/07/2015
Canterbury Block MLE Upgrade Option 3	1501-C005	B	8/06/2015

2.2 Canterbury Block- Four-classroom Type

The standard single-storey; four-classroom Canterbury Block of Ministry of Education (MOE) is a standard classroom block constructed at various schools throughout New Zealand. Construction consists of a light-weight timber frame with weatherboard or brick façade and corrugated iron roofing. Typically, existing Canterbury Blocks consisted of four classrooms with shared cloakroom and toilets.

The proposed work is to upgrade the existing standard four-classroom Canterbury Block to become a “Flexible Learning Space (FLS)”, previously referred to as a “Modern Learning Environment (MLE)”. Three options of similar layout have been considered for the Canterbury Block FLS upgrade - options 1, 2 and 3.

Option 1 consists of four interconnected classrooms equivalent in size with two breakout rooms and two toilet and bag storage areas.

Option 2 also consists of four interconnected classrooms equivalent in size but with two breakout rooms, two toilets and a resource room.

Option 3 also consists of four interconnected classrooms equivalent in size but with three breakout rooms and a toilet.

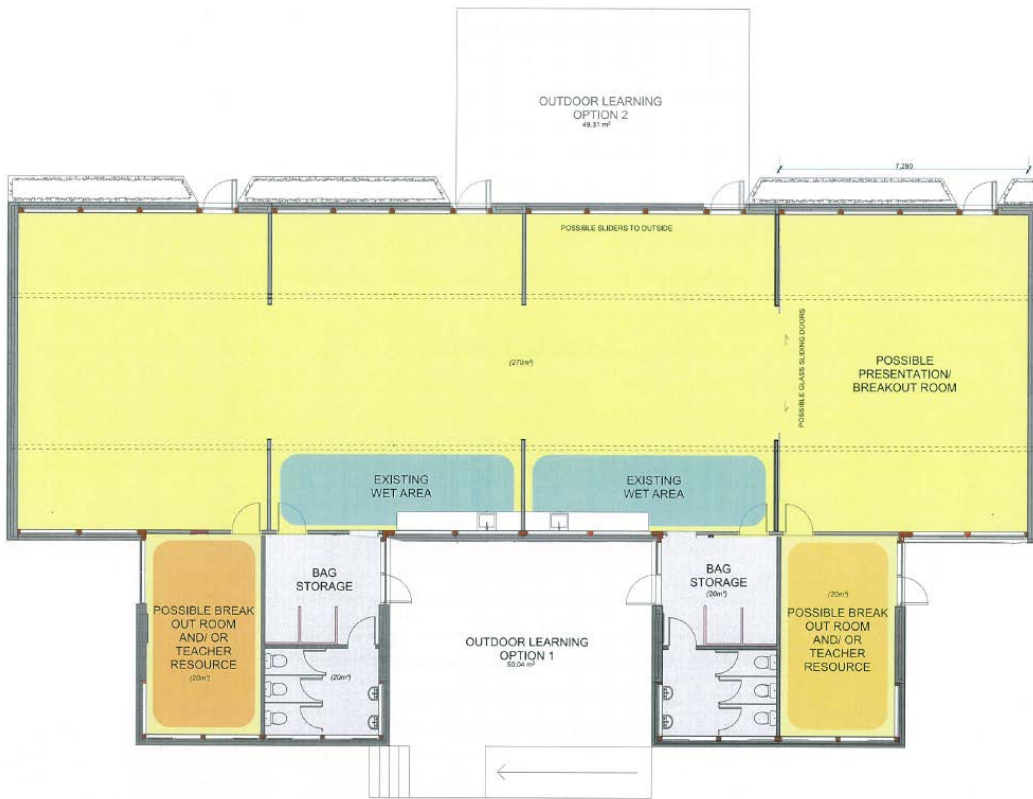


Figure 1: Canterbury Block FLS upgrade Option 1

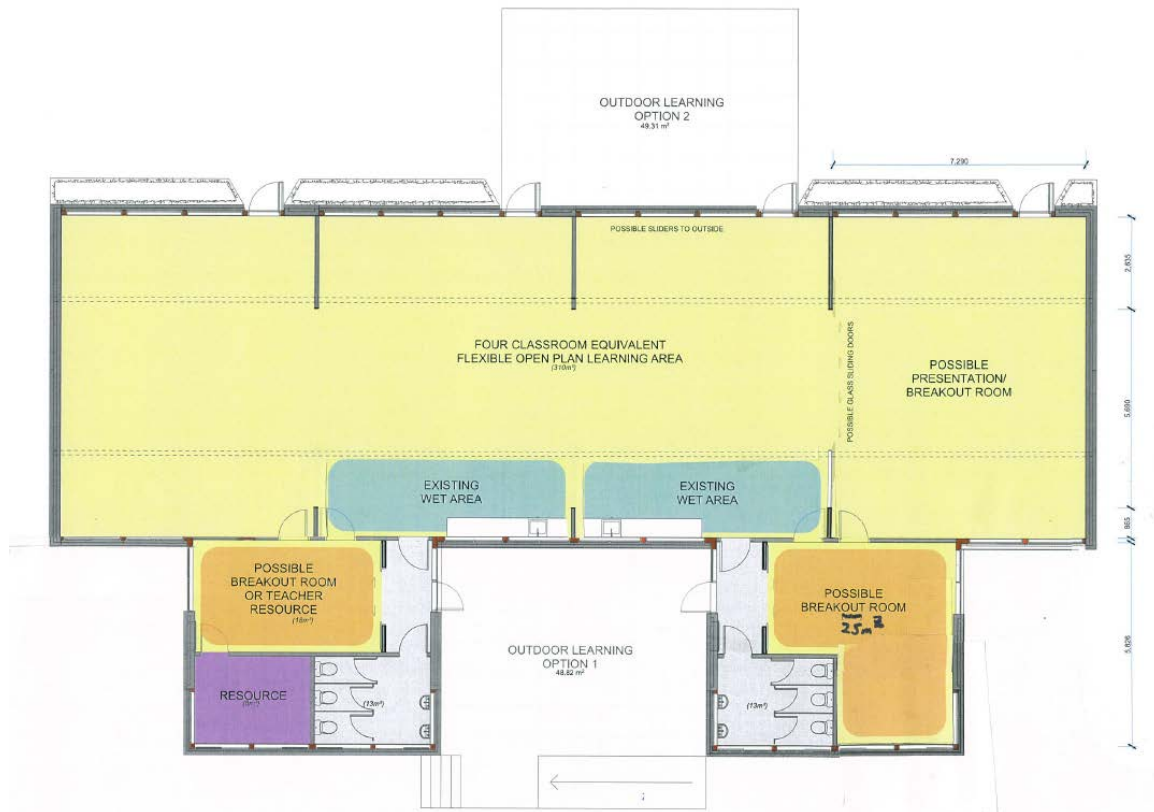


Figure 2: Canterbury Block FLS upgrade Option 2

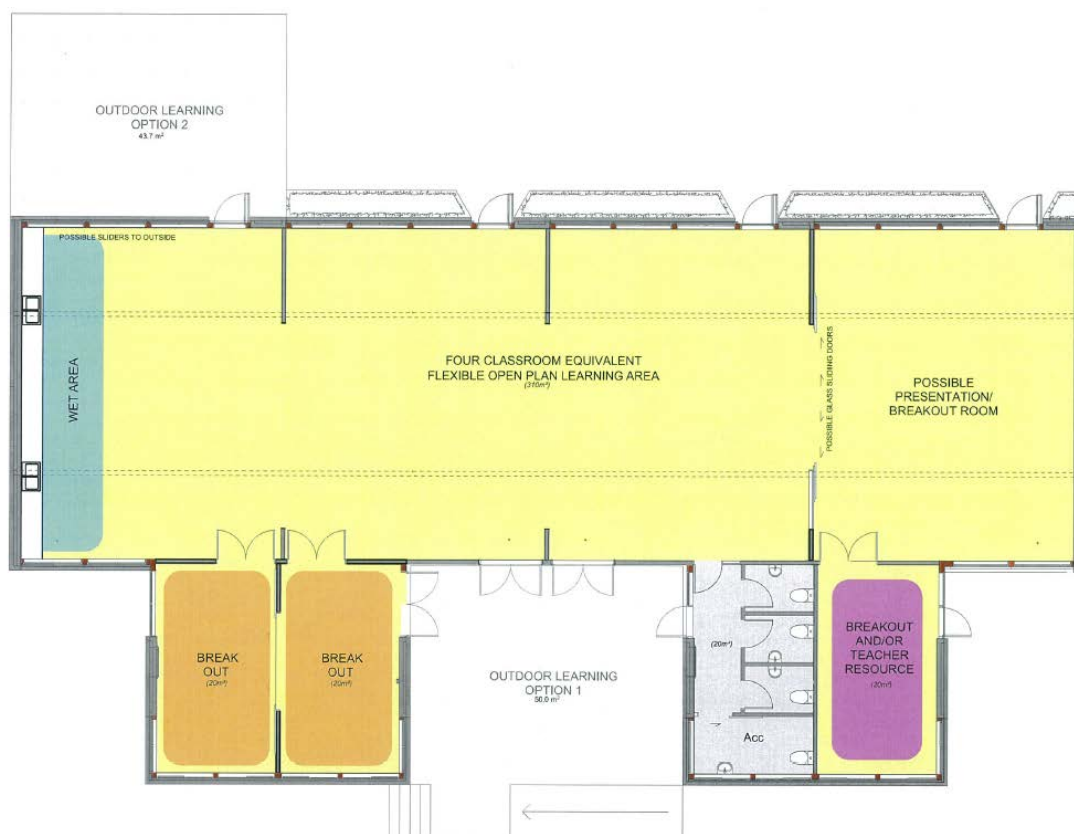


Figure 3: Canterbury Block FLS upgrade Option 3

3. Accessible Car Parks

This is a site specific item. Accessible car park requirements of NZS 4121 for the school site are given in Table 2.

Table 2: Required accessible car park provisions

NZS 4121 Requirements	
No. of accessible car parks required	<ul style="list-style-type: none"> Not less than one accessible carpark when up to 20 normal carparks are provide; or Two accessible car parks for 21 to 50 normal car parks provided and for every additional 50 normal car parks an additional accessible car park is required.
Signage	Signage for the car parking space(s) shall be readily visible from the vehicle at the entrance to the car park, or guide signs shall be provided to indicate the direction of the space. The space shall have ground marking of the International Symbol of Access (ISA) and may have directional signage.
Spatial provision	<ul style="list-style-type: none"> Car parks set at 90° to the footpath shall be not less than 3500 mm wide. Any angled car parks shall have an operational width of 3500 mm. Where the car park space is parallel and adjacent to a marked footpath on the same level as the parking space, the width of the common footpath may form part of the parking. The car parking space length shall be no less than 5000 mm. 2500 mm minimum height to be maintained from the entry of the car park to the accessible car park.
Ground condition	Accessible car park space(s) shall be provided on a stable, firm, slip resistant flat surface with a slope not exceeding 1:50.

General requirements

- People with disabilities shall not have to pass behind parked cars when moving to an accessible route, or when approaching an entrance.
- Flat access shall be provided whenever possible between the car park space(s) and adjoining footpath - alternatively kerb ramps are to be provided.

4. Accessible Routes

4.1 Access- General

This is a site specific item. Where Canterbury Block classrooms are required to be accessible, NZS 4121 requires that an accessible route shall be provided that connects from the point of arrival on site to the Canterbury Block required to be accessible to people with disabilities. The main entrance to the school shall be on an accessible route. If this is not possible there shall be signage indicating the location of an accessible entrance.

4.2 Footpaths and Ramps

This is a site specific item. Where Canterbury Block classrooms are required to be accessible, footpaths and ramps to Formula Block shall meet the requirements in Table 3. Each option proposed for Canterbury Block has ramp proposed and shall meet the requirements in Table 3.

Table 3: Required ramp provisions

NZS 4121 Requirements	
Crossfall	Accessible route shall have a crossfall of no greater than 1:50.
Spatial provision	<ul style="list-style-type: none">• Footpaths and ramps shall have a width of not less than 1,200 mm (1,000 mm between handrails).• Ramps shall have a maximum slope of 1:12. It is preferably 1:14.• Ramps steeper than 1: 20 shall have handrails both sides extending 300 mm beyond the head and foot of the ramp.• Ramps shall have landings top and bottom, extending 1,200 mm beyond any doorway or door swing.• Maximum rise between ramp landings (and rest areas) to be 750 mm.
Handrails	<ul style="list-style-type: none">• Handrails to be between 840 and 1,000 mm above surface of ramp.• Handrail diameter between 32 and 50 mm.• Handrails to have clearance of 45 to 60 mm from wall.
Ground condition	Footpaths and ramps shall have a non-slip surface.
General requirements	<ul style="list-style-type: none">• Portable ramp is not permitted.• All ramps to have an upstand no less than 75 mm high or low rail no more than 75 mm above the ramp to prevent a wheelchair from running off the edge.

4.3 Building Entry

Refer to Figure 1, Figure 2 and Figure 3. Where Canterbury Block classrooms are required to be accessible, since each classroom is interconnected, it is proposed that an accessible entrance to be provided at the entrance from the covered outdoor learning area where an accessible ramp is proposed.

Table 4: Required accessible entrance provisions

NZS 4121 Requirements	
Level access	The entry door from the covered outdoor learning space at the bottom of the proposed plans into the Canterbury classrooms is preferably to include no thresholds, or is to be less than 20 mm.
Spatial provision	<ul style="list-style-type: none">• 1200 mm wide by 1200 mm long manoeuvring areas are required both before and after entry door.• A minimum clear width of 1200 mm to be provided within an accessible corridor following the entry door.• The spatial provision in the proposed Options 1, 2 and 3 at the entrance from the covered outdoor learning space at the bottom of proposed plans will meet the requirements as inspected from the architectural drawings.
Opening of door	<ul style="list-style-type: none">• Provide a clear opening of not less than 760 mm when the door is opened.• Double doors shall provide at least one leaf of 760 mm clear opening.• The single doors into Canterbury classrooms from the covered outdoor learning space at the bottom of the proposed Option 1 and 2 are no less than 760 mm therefore expected to meet the requirement.• The double doors into Canterbury classrooms from the covered outdoor learning space at the bottom of the proposed Option 3 have at least one leaf no less than 760 mm therefore expected to meet the requirement.
General requirements	<ul style="list-style-type: none">• Glazing if provided on entry doors it shall be marked in accordance with NZS 4223.3.• Entry door shall have a clear colour contrast with respect to its surroundings.

4.4 Stairways and Lifts

Not applicable as the standard four-classroom Canterbury Type classroom block is single storey.

4.5 Doorways and Openings on Accessible Routes

The clear minimum width of doorways on an accessible route shall be 760 mm when the door is open. Any pair doorsets on accessible routes must have at least one leaf that provides a clear opening of 760 mm. All doors shall have handles between 900 and 1,200 mm above finished floor level, and which shall be lever action with the end of the handle returned towards the door.

Doors that swing both directions must have vision panels complying with NZS4121 7.3.2. Note that revolving doors, turnstiles or similar are generally not acceptable on accessible routes.

Internal doors have no thresholds, and exterior doors have thresholds less than 20 mm high which complies with NZS 4121.

4.6 Signs

NZS 4121 requires that every complying building shall have signs to enable people with disabilities to avoid having to ask for directions. Given that the Canterbury Blocks will be occupied principally by staff and students who must be completely familiar with the layout to be able to perform normal functions we propose that no additional special signage for disabled facilities is necessary.

5. Toilet Facilities

Option 1 and 2 do not have accessible toilet facilities proposed. This is acceptable provided that accessible hygiene facilities exist elsewhere on the school site and an accessible route between Canterbury Blocks and the facilities is available. The accessible toilet proposed in Option 3 shall comply with the requirements of NZS 4121 in Table 5.

Table 5: Required toilet provisions

NZS 4121 Requirements	
Spatial provision	<ul style="list-style-type: none">• Minimum dimensions of 1,900 mm x 1,600 mm.
Door	<ul style="list-style-type: none">• 760 mm clear opening.• If door is hinged shall swing outwards.• Sliding door is acceptable.
General requirements	<ul style="list-style-type: none">• Horizontal leg of grab rail beside WC pan is fixed 700 mm above floor level.• Vertical leg of grab rail is fixed between 150 and 250 mm from front of pan.• Top of pan seat is 460 mm above floor.• Front edge of pan seat is 700 – 750 mm from wall behind.• Washbasin has 675 minimum underside clearance from floor and is located 300 mm from the front of the pan.• Taps to have lever handles (hot tap to left of cold tap).

6. Public Facilities

6.1 Public Counter and Desks

Not applicable to Canterbury Blocks.

6.2 Telephone

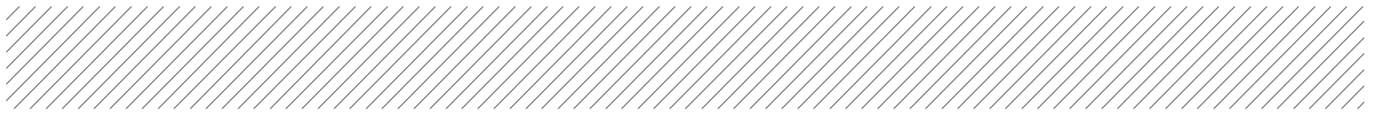
Given the current level of use of mobile telephones available, it is not considered necessary to provide a public telephone in accordance with NZS 4121.

7. Outdoor Public Areas

There are two covered outdoor learning spaces proposed in each option. We are in opinion that the outdoor learning space will meet the NZS4121 requirement with at least one of them be accessible from the classrooms. The entry doors into Canterbury classrooms from the covered outdoor learning space for each option is proposed to be the main accessible entrance (refer to 4.3 of the report). Therefore access requirements from the classrooms to the outdoor learning space for each option are expected to be met, provided that requirements in section 4.1, 4.2 and 4.3 in this report are met. Overhead signs, lights, awnings and similar objects shall have a minimum of 2,000 mm clearance above the ground or finished surface of the covered outdoor learning space.

8. Conclusion

We are of the opinion that provided the above requirements are met, then proposed FLS upgrade to the existing standard four-classroom Canterbury Type classroom block- options 1, 2 and 3 will meet the requirements of the Building Code for access and facilities for persons with disabilities, and will



otherwise continue to comply with the requirements of the New Zealand Building Code as nearly as is reasonably practicable.



Aurecon New Zealand Limited

Level 1, 102 Customhouse Quay
Wellington 6011

PO Box 1591
Wellington 6140
New Zealand

T +64 4 472 9589

F +64 4 472 9922

E wellington@aurecongroup.com

W aurecongroup.com

Aurecon offices are located in:

Angola, Australia, Botswana, China,
Ethiopia, Hong Kong, Indonesia,
Lesotho, Libya, Malawi, Mozambique,
Namibia, New Zealand, Nigeria,
Philippines, Singapore, South Africa,
Swaziland, Tanzania, Thailand, Uganda,
United Arab Emirates, Vietnam.