

# FORMULA BLOCK

MINISTRY OF EDUCATION FLEXIBLE LEARNING SPACE REFERENCE  
DESIGNS FOR STANDARD CLASSROOM UPGRADE  
AUCKLAND, WELLINGTON AND  
CHRISTCHURCH



**aurecon**

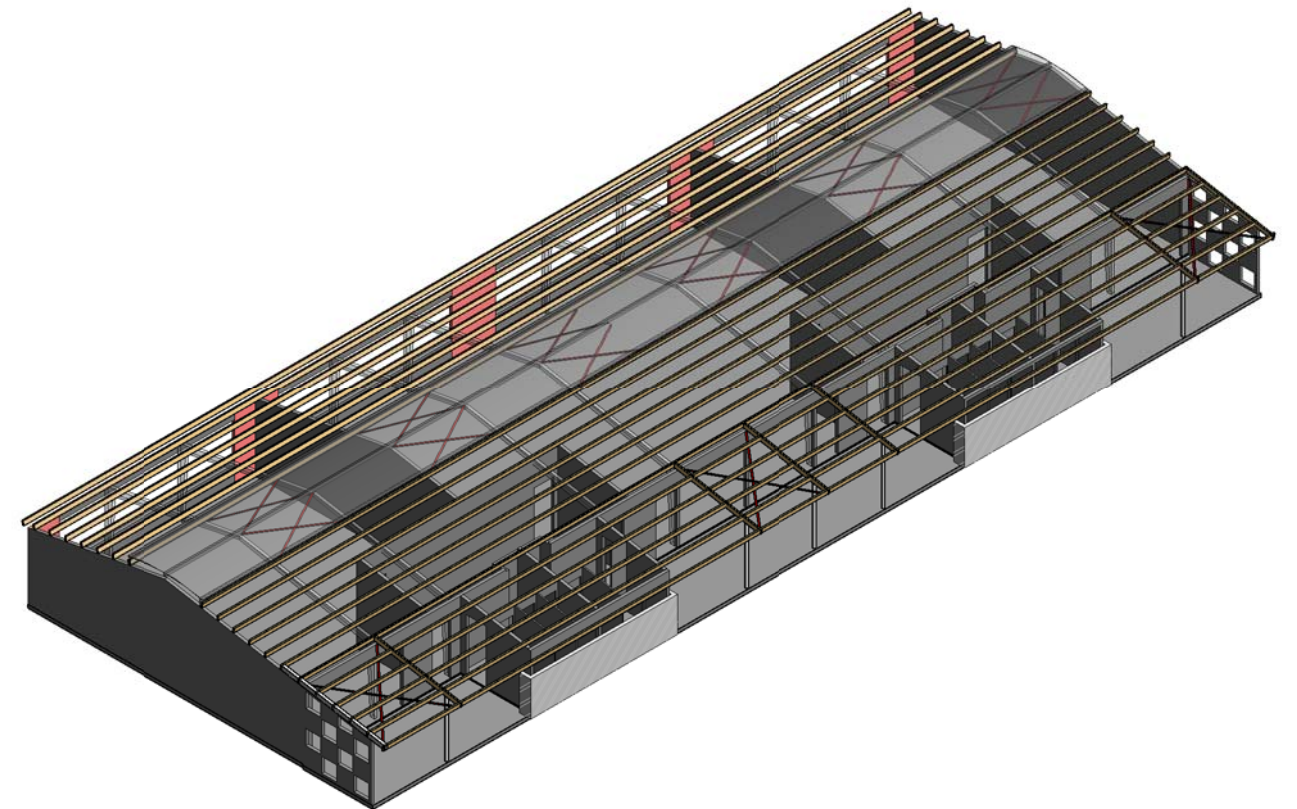
[www.aurecongroup.com](http://www.aurecongroup.com)

ABN: 54 005 139 873

A person using the Aurecon drawings and other data accepts the risk of:  
1. Using the drawings and other data in electronic form without requesting and checking them for accuracy against the original hard copy versions;  
2. Using the drawing or other data for any purpose not agreed to in writing by Aurecon.  
Wherever a discrepancy in the contract documents is found and unless directed otherwise by the Principal/Engineer, the contractor shall adopt, at their own cost the greater quantum, class of finish, grade, or specification where applicable.

**INFORMATION ONLY  
NOT FOR CONSTRUCTION**

SIZE	DATE	DRAWING No.	PROJECT No.	WBS	TYPE	DISC - NUMBER	REV
A1	29/10/15		246313	FORM	DRG	S00-00	A



3D VIEW

NOTES:  
 THESE STRUCTURAL DESIGN METHODOLOGIES HAVE BEEN DEVELOPED BASED ON SET ARCHITECTURAL ALTERATIONS AS WELL AS A NUMBER OF ASSUMPTIONS IN REGARDS TO THE LOCATION AND EXISTING DETAILS OF THE BUILDING. THE SUITABILITY OF THESE STRUCTURAL SCHEMES FOR APPLICATION TO ANY SPECIFIC BUILDING SHOULD BE ASSESSED BY A SUITABLY QUALIFIED ENGINEER PRIOR TO IMPLEMENTATION.  
 A BUILDING CONSENT WILL BE REQUIRED BEFORE CARRYING OUT ANY ALTERATIONS.

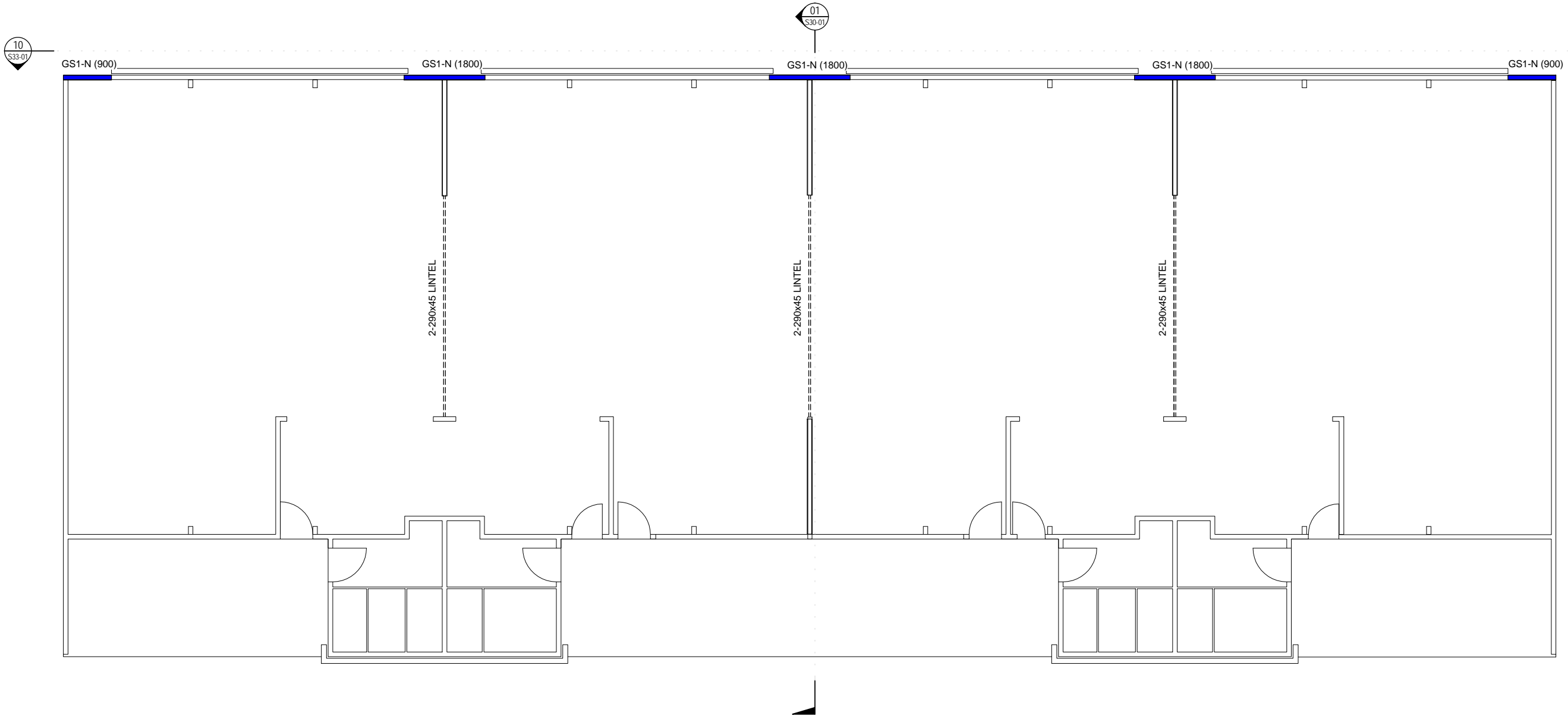
File Path: C:\Users\jfinnegan\Documents\Documents\246313\AURECON\BLOCK-CENTRAL-ELE-2015-09-08-08-00-00.dwg

REV	DATE	REVISION DETAILS	APPROVAL
A	29/10/15	FOR INFORMATION	J.FINNEGAN

SCALE	SIZE
1:1	A1
<b>DRAWN</b>	
W.E.NICHOLSON	
<b>DESIGNED</b>	
P.DON	
<b>CHECKED</b>	
C.HECKMANN	

INFORMATION ONLY NOT FOR CONSTRUCTION	
<b>APPROVED</b>	DATE
J. FINNEGAN	20/10/15
J. FINNEGAN	

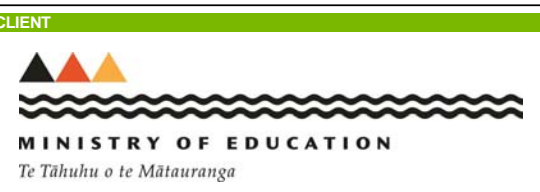
PROJECT	MINISTRY OF EDUCATION FLEXIBLE LEARNING SPACE REFERENCE DESIGNS FOR STANDARD CLASSROOM UPGRADE AUCKLAND, WELLINGTON AND CHRISTCHURCH
TITLE	FORMULA BLOCK SESMIC STRENGTHING GENERAL 3D AND PHOTO
DRAWING No.	246313 - FORM - DRG - S10-01 - A



FLOOR PLAN - OPTION 1  
1 : 50

- NOTES:
1. ALL TIMBER TO BE SG8 GRADE.
  2. ALL WALL BRACING TO BE INSTALLED TO MANUFACTURERS SPECIFICATION. THIS INCLUDES PERIMETER SHEET FIXINGS AND WALL END HOLD DOWNS.
  3. ALL STEELWORK SHALL BE CLEANED AND THEN PRIMED WITH ONE COAT OF APPROVED RED OXIDE ZINC PHOSPHATE ALKYD PRIMER TO ACHIEVE A MINIMUM DRY FILM THICKNESS OF 75 MICRONS.
  4. NEW WALLS NOT LABELED AS SPECIFIC BRACING WALLS SHALL BE LINED WITH STANDARD PLASTERBOARD LININGS (BOTH SIDES FOR INTERNAL WALLS. 1 SIDE FOR EXTERNAL WALLS)
  5. SEE S48-01 FOR TYPICAL LINTEL FIXING AND BRACING WALL HOLD DOWN DETAILS.
  6. REFER TO DESIGN FEATURES REPORT FOR DESCRIPTION OF THE STRUCTURAL SCHEME, LOADING PARAMETERS AND %NBS TARGET VALUES.

File Path: C:\Users\jfinnegan\Documents\Documents\246313\AUCKLAND\BLOCK CENTRAL E1E 2015.mxd Date: 20/10/2015 16:32:50 n. Office:

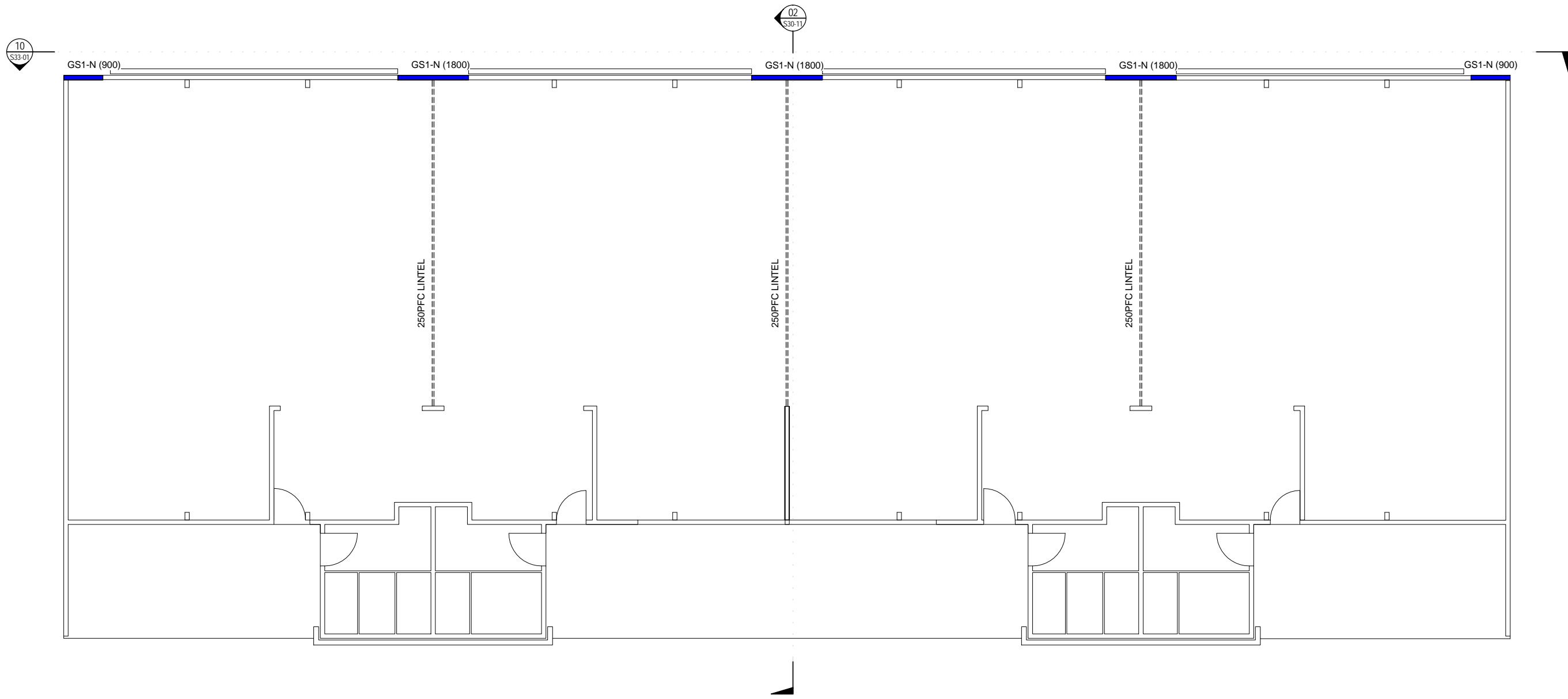


REV	DATE	REVISION DETAILS	APPROVAL
A	29/10/15	FOR INFORMATION	J.FINNEGAN

SCALE	SIZE
As indicated	A1
<b>DRAWN</b>	
W.E.NICHOLSON	
<b>DESIGNED</b>	
P.DON	
<b>CHECKED</b>	
C.HECKMANN	

INFORMATION ONLY NOT FOR CONSTRUCTION	
<b>APPROVED</b>	DATE
J. FINNEGAN	20/10/15
J. FINNEGAN	

PROJECT	MINISTRY OF EDUCATION FLEXIBLE LEARNING SPACE REFERENCE DESIGNS FOR STANDARD CLASSROOM UPGRADE AUCKLAND, WELLINGTON AND CHRISTCHURCH	
<b>TITLE</b>	FORMULA BLOCK OPTION 1 AUCKLAND	
<b>DRAWING No.</b>	PROJECT No.	WBS
246313	FORM	DRG
	TYPE	DISC - NUMBER
		S25-01
	REV	A



FLOOR PLAN - OPTION 2  
1:50

NOTES:

1. ALL TIMBER TO BE SG8 GRADE.
2. ALL WALL BRACING TO BE INSTALLED TO MANUFACTURERS SPECIFICATION. THIS INCLUDES PERIMETER SHEET FIXINGS AND WALL END HOLD DOWNS.
3. ALL STEELWORK SHALL BE CLEANED AND THEN PRIMED WITH ONE COAT OF APPROVED RED OXIDE ZINC PHOSPHATE ALKYD PRIMER TO ACHIEVE A MINIMUM DRY FILM THICKNESS OF 75 MICRONS.
4. NEW WALLS NOT LABELED AS SPECIFIC BRACING WALLS SHALL BE LINED WITH STANDARD PLASTERBOARD LININGS (BOTH SIDES FOR INTERNAL WALLS, 1 SIDE FOR EXTERNAL WALLS)
5. SEE S48-01 FOR TYPICAL LINTEL FIXING AND BRACING WALL HOLD DOWN DETAILS.
6. REFER TO DESIGN FEATURES REPORT FOR DESCRIPTION OF THE STRUCTURAL SCHEME, LOADING PARAMETERS AND %NBS TARGET VALUES.

File Path: C:\Users\jhepp\Documents\Documents\246313\AEC\FORMULA BLOCK CENTRAL ELE 2015.mxd  
Date: 20/10/2015 10:25:50 a.m. Office:

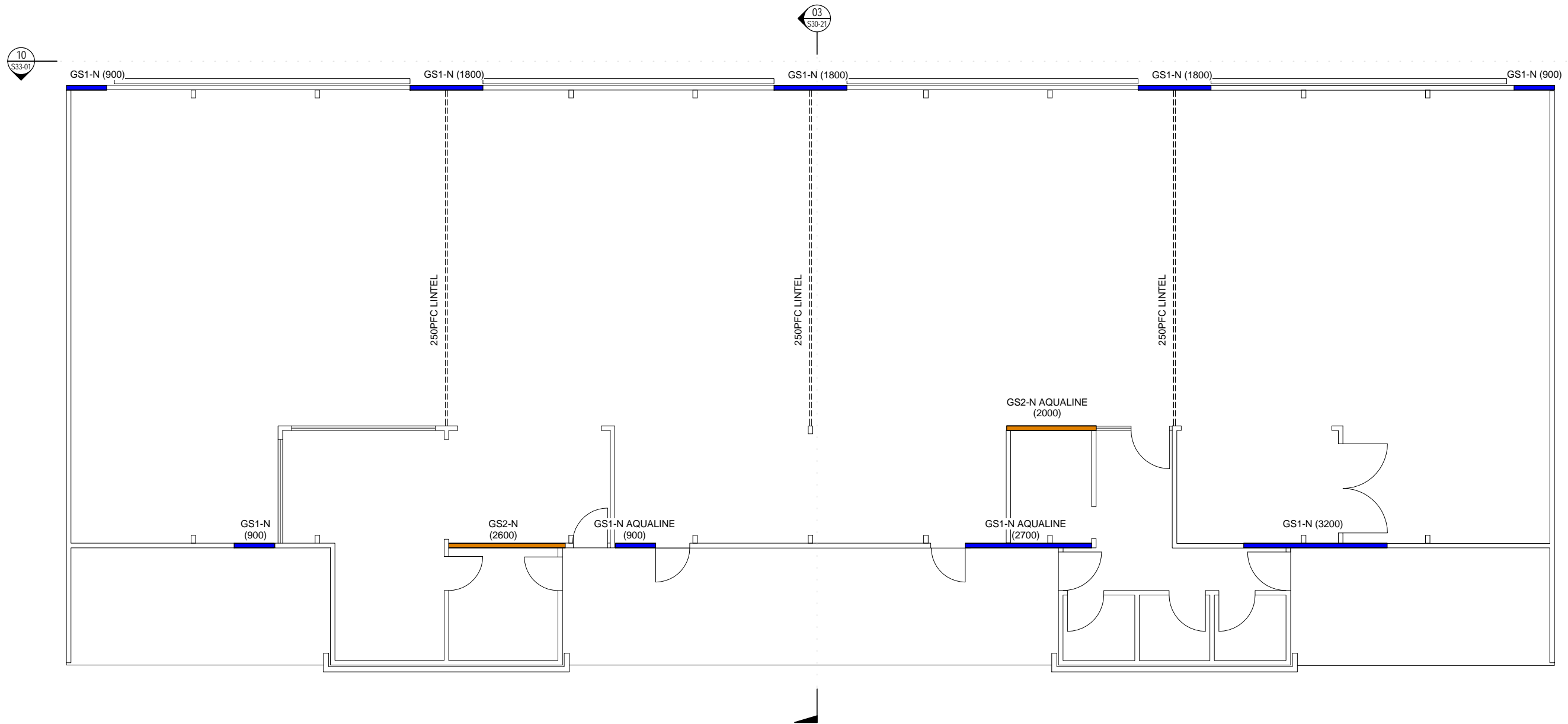


REV	DATE	REVISION DETAILS	APPROVAL
A	29/10/15	FOR INFORMATION	J.FINNEGAN

SCALE	SIZE
As indicated	A1
<b>DRAWN</b>	
W.E.NICHOLSON	
<b>DESIGNED</b>	
P.DON	
<b>CHECKED</b>	
C.HECKMANN	

INFORMATION ONLY NOT FOR CONSTRUCTION	
<b>APPROVED</b>	DATE
J. FINNEGAN	20/10/15
J. FINNEGAN	

PROJECT	MINISTRY OF EDUCATION FLEXIBLE LEARNING SPACE REFERENCE DESIGNS FOR STANDARD CLASSROOM UPGRADE AUCKLAND, WELLINGTON AND CHRISTCHURCH
TITLE	FORMULA BLOCK OPTION 2 AUCKLAND
DRAWING No.	246313
PROJECT No.	246313
WBS	FORM
TYPE	DRG
DISC - NUMBER	S25-11
REV	A



FLOOR PLAN - OPTION 3  
1:50

NOTES:

1. ALL TIMBER TO BE SG8 GRADE.
2. ALL WALL BRACING TO BE INSTALLED TO MANUFACTURERS SPECIFICATION. THIS INCLUDES PERIMETER SHEET FIXINGS AND WALL END HOLD DOWNS.
3. ALL STEELWORK SHALL BE CLEANED AND THEN PRIMED WITH ONE COAT OF APPROVED RED OXIDE ZINC PHOSPHATE ALKYD PRIMER TO ACHIEVE A MINIMUM DRY FILM THICKNESS OF 75 MICRONS.
4. NEW WALLS NOT LABELED AS SPECIFIC BRACING WALLS SHALL BE LINED WITH STANDARD PLASTERBOARD LININGS (BOTH SIDES FOR INTERNAL WALLS. 1 SIDE FOR EXTERNAL WALLS)
5. SEE S48-01 FOR TYPICAL LINTEL FIXING AND BRACING WALL HOLD DOWN DETAILS.
6. REFER TO DESIGN FEATURES REPORT FOR DESCRIPTION OF THE STRUCTURAL SCHEME, LOADING PARAMETERS AND %NBS TARGET VALUES.

Proj Date: 20/10/2015 15:32:28 n.m. - Office: E:\projec\CL\Burlington\44444444\Documents\246313\AUCKLAND\BLOCK CENTRAL E.L.E. 2015.mxd

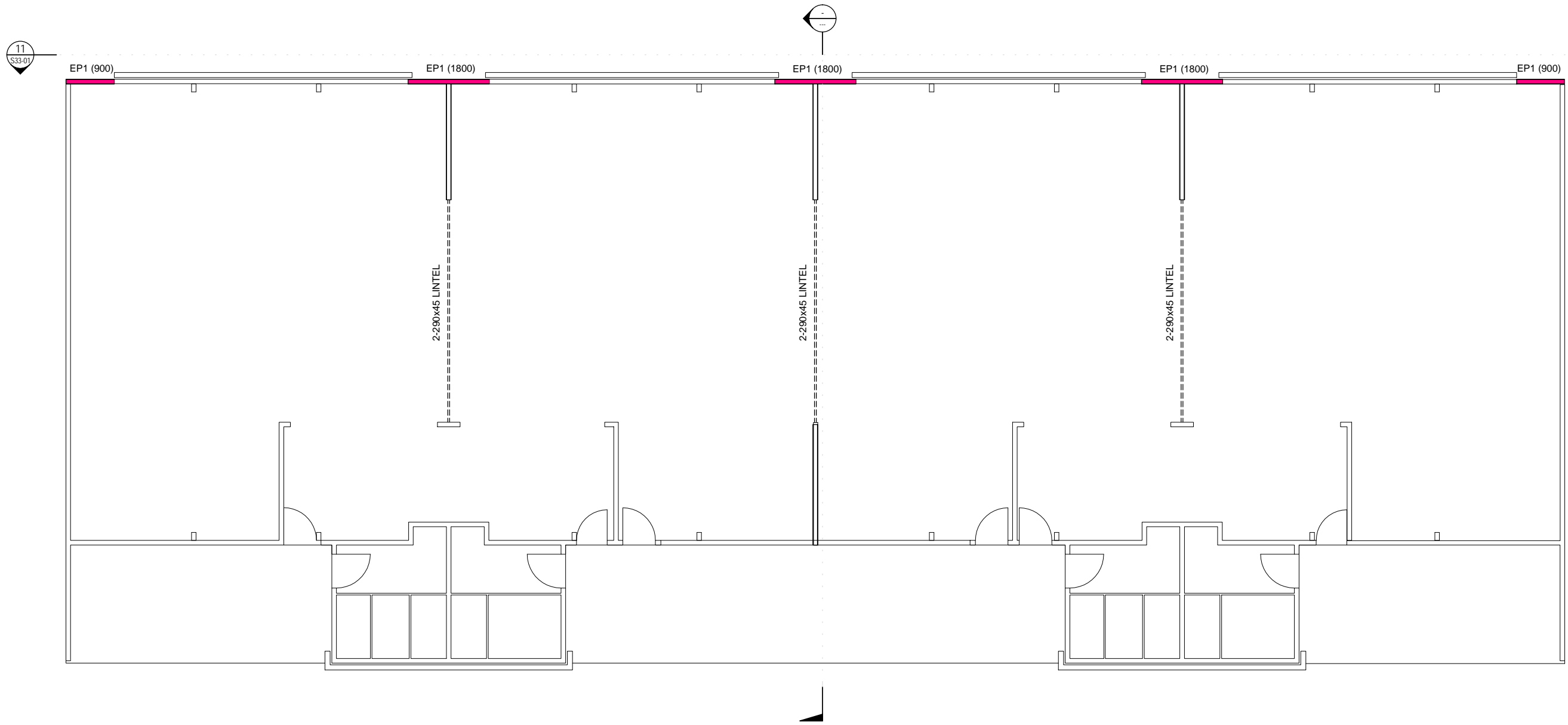


REV	DATE	REVISION DETAILS	APPROVAL
A	29/10/15	FOR INFORMATION	J.FINNEGAN

SCALE	SIZE
As indicated	A1
<b>DRAWN</b>	
W.E.NICHOLSON	
<b>DESIGNED</b>	
P.DON	
<b>CHECKED</b>	
C.HECKMANN	

INFORMATION ONLY NOT FOR CONSTRUCTION	
<b>APPROVED</b>	DATE
J. FINNEGAN	20/10/15
J. FINNEGAN	

PROJECT	MINISTRY OF EDUCATION FLEXIBLE LEARNING SPACE REFERENCE DESIGNS FOR STANDARD CLASSROOM UPGRADE AUCKLAND, WELLINGTON AND CHRISTCHURCH
TITLE	FORMULA BLOCK OPTION 3 AUCKLAND
DRAWING No.	246313
PROJECT No.	
WBS	FORM
TYPE	DRG
DISC - NUMBER	S25-21
REV	A



FLOOR PLAN - OPTION 1  
1 : 50

NOTES:

1. ALL TIMBER TO BE SG8 GRADE.
2. ALL WALL BRACING TO BE INSTALLED TO MANUFACTURERS SPECIFICATION. THIS INCLUDES PERIMETER SHEET FIXINGS AND WALL END HOLD DOWNS.
3. ALL STEELWORK SHALL BE CLEANED AND THEN PRIMED WITH ONE COAT OF APPROVED RED OXIDE ZINC PHOSPHATE ALKYD PRIMER TO ACHIEVE A MINIMUM DRY FILM THICKNESS OF 75 MICRONS.
4. NEW WALLS NOT LABELED AS SPECIFIC BRACING WALLS SHALL BE LINED WITH STANDARD PLASTERBOARD LININGS (BOTH SIDES FOR INTERNAL WALLS. 1 SIDE FOR EXTERNAL WALLS)
5. SEE S48-01 FOR TYPICAL LINTEL FIXING AND BRACING WALL HOLD DOWN DETAILS.
6. REFER TO DESIGN FEATURES REPORT FOR DESCRIPTION OF THE STRUCTURAL SCHEME, LOADING PARAMETERS AND %NBS TARGET VALUES.

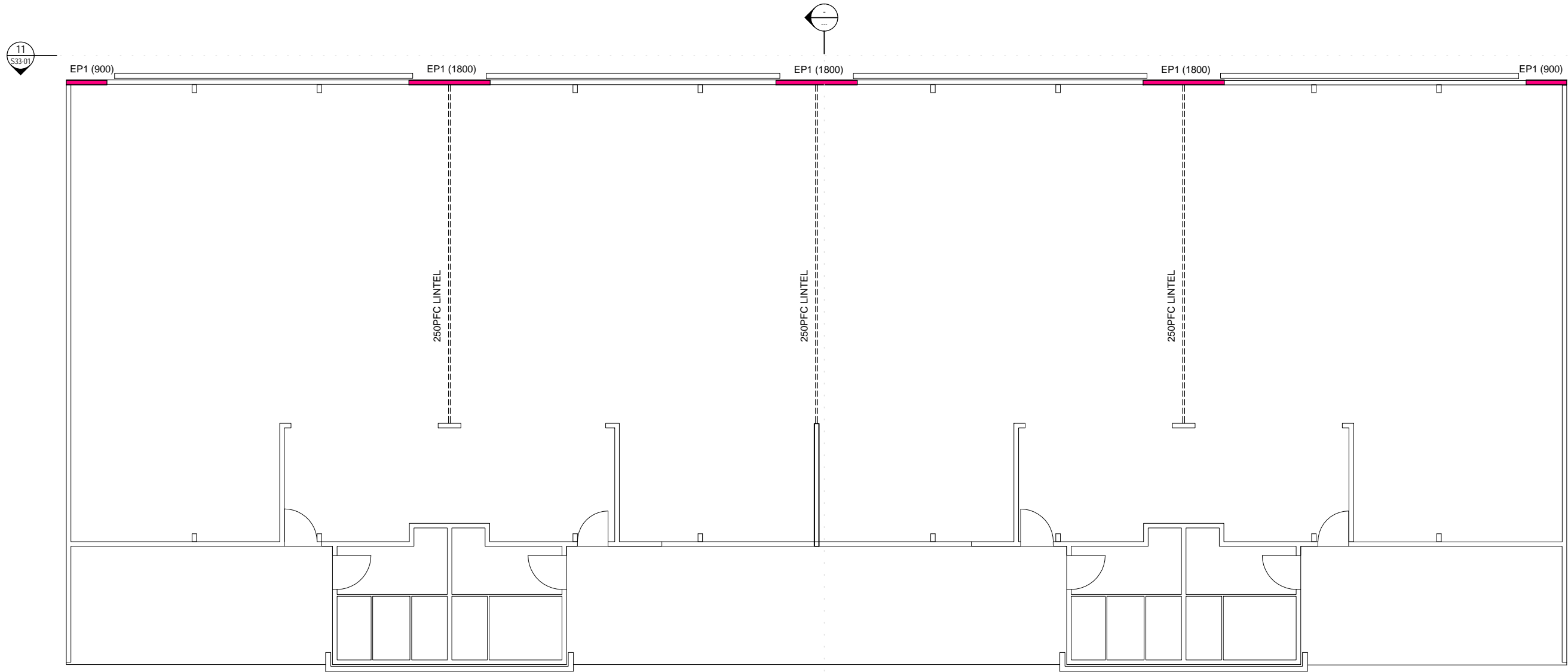
File Path: C:\Users\jsharpe\Documents\Documents\246313\AEC\FORMULA BLOCK CENTRAL ELE 2015.spl\mshb01.rvt Date: 20/10/2015 16:33:00 n. Office:

REV	DATE	REVISION DETAILS	APPROVAL
A	29/10/15	FOR INFORMATION	J.FINNEGAN

SCALE	SIZE
As indicated	A1
<b>DRAWN</b>	
W.E.NICHOLSON	
<b>DESIGNED</b>	
P.DON	
<b>CHECKED</b>	
C.HECKMANN	

INFORMATION ONLY NOT FOR CONSTRUCTION	
<b>APPROVED</b>	DATE
J. FINNEGAN	20/10/15
J. FINNEGAN	

PROJECT	TITLE	DRAWING No.	PROJECT No.	WBS	TYPE	DISC - NUMBER	REV
MINISTRY OF EDUCATION FLEXIBLE LEARNING SPACE REFERENCE DESIGNS FOR STANDARD CLASSROOM UPGRADE AUCKLAND, WELLINGTON AND CHRISTCHURCH	FORMULA BLOCK OPTION 1 WELLINGTON, CHRISTCHURCH	246313	246313	FORM	DRG	S25-51	A



FLOOR PLAN - OPTION 2  
1 : 50

NOTES:

1. ALL TIMBER TO BE SG8 GRADE.
2. ALL WALL BRACING TO BE INSTALLED TO MANUFACTURERS SPECIFICATION. THIS INCLUDES PERIMETER SHEET FIXINGS AND WALL END HOLD DOWNS.
3. ALL STEELWORK SHALL BE CLEANED AND THEN PRIMED WITH ONE COAT OF APPROVED RED OXIDE ZINC PHOSPHATE ALKYD PRIMER TO ACHIEVE A MINIMUM DRY FILM THICKNESS OF 75 MICRONS.
4. NEW WALLS NOT LABELED AS SPECIFIC BRACING WALLS SHALL BE LINED WITH STANDARD PLASTERBOARD LININGS (BOTH SIDES FOR INTERNAL WALLS. 1 SIDE FOR EXTERNAL WALLS)
5. SEE S48-01 FOR TYPICAL LINTEL FIXING AND BRACING WALL HOLD DOWN DETAILS.
6. REFER TO DESIGN FEATURES REPORT FOR DESCRIPTION OF THE STRUCTURAL SCHEME, LOADING PARAMETERS AND %NBS TARGET VALUES.

File Path: C:\Users\jfinnegan\Documents\246313\AEC\FORMULA BLOCK CENTRAL ELE 2015.mxd Date: 20/10/15 15:33:01 n.m. Office:

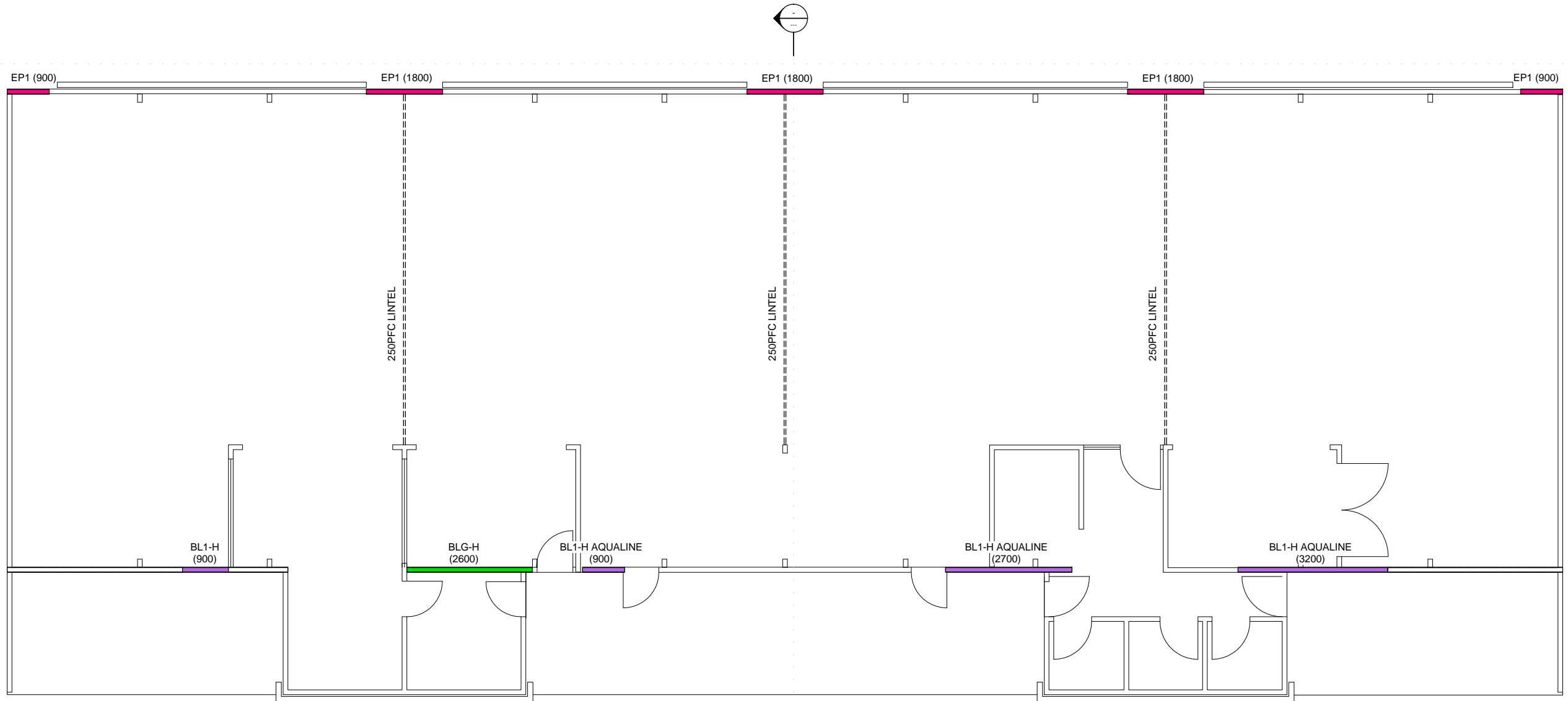
REV	DATE	REVISION DETAILS	APPROVAL
A	29/10/15	FOR INFORMATION	J.FINNEGAN

SCALE	SIZE
As indicated	A1
<b>DRAWN</b>	
W.E.NICHOLSON	
<b>DESIGNED</b>	
P.DON	
<b>CHECKED</b>	
C.HECKMANN	

INFORMATION ONLY NOT FOR CONSTRUCTION	
<b>APPROVED</b>	DATE
J. FINNEGAN	20/10/15
J. FINNEGAN	

PROJECT	TITLE	DRAWING No.	PROJECT No.	WBS	TYPE	DISC - NUMBER	REV
MINISTRY OF EDUCATION FLEXIBLE LEARNING SPACE REFERENCE DESIGNS FOR STANDARD CLASSROOM UPGRADE AUCKLAND, WELLINGTON AND CHRISTCHURCH	FORMULA BLOCK OPTION 2 WELLINGTON, CHRISTCHURCH	246313	246313	FORM	DRG	S25-61	A

11  
S33-01



FLOOR PLAN - OPTION 3  
1 : 50

NOTES:

1. ALL TIMBER TO BE SG8 GRADE.
2. ALL WALL BRACING TO BE INSTALLED TO MANUFACTURERS SPECIFICATION. THIS INCLUDES PERIMETER SHEET FIXINGS AND WALL END HOLD DOWNS.
3. ALL STEELWORK SHALL BE CLEANED AND THEN PRIMED WITH ONE COAT OF APPROVED RED OXIDE ZINC PHOSPHATE ALKYD PRIMER TO ACHIEVE A MINIMUM DRY FILM THICKNESS OF 75 MICRONS.
4. NEW WALLS NOT LABELED AS SPECIFIC BRACING WALLS SHALL BE LINED WITH STANDARD PLASTERBOARD LININGS (BOTH SIDES FOR INTERNAL WALLS. 1 SIDE FOR EXTERNAL WALLS)
5. SEE S48-01 FOR TYPICAL LINTEL FIXING AND BRACING WALL HOLD DOWN DETAILS.
6. REFER TO DESIGN FEATURES REPORT FOR DESCRIPTION OF THE STRUCTURAL SCHEME, LOADING PARAMETERS AND %NBS TARGET VALUES.

File Path: C:\Users\jfinnegan\Documents\246313\AURECON\FORMULA BLOCK CENTRAL ELE 2015.mxd

REV	DATE	REVISION DETAILS	APPROVAL
A	29/10/15	FOR INFORMATION	J.FINNEGAN

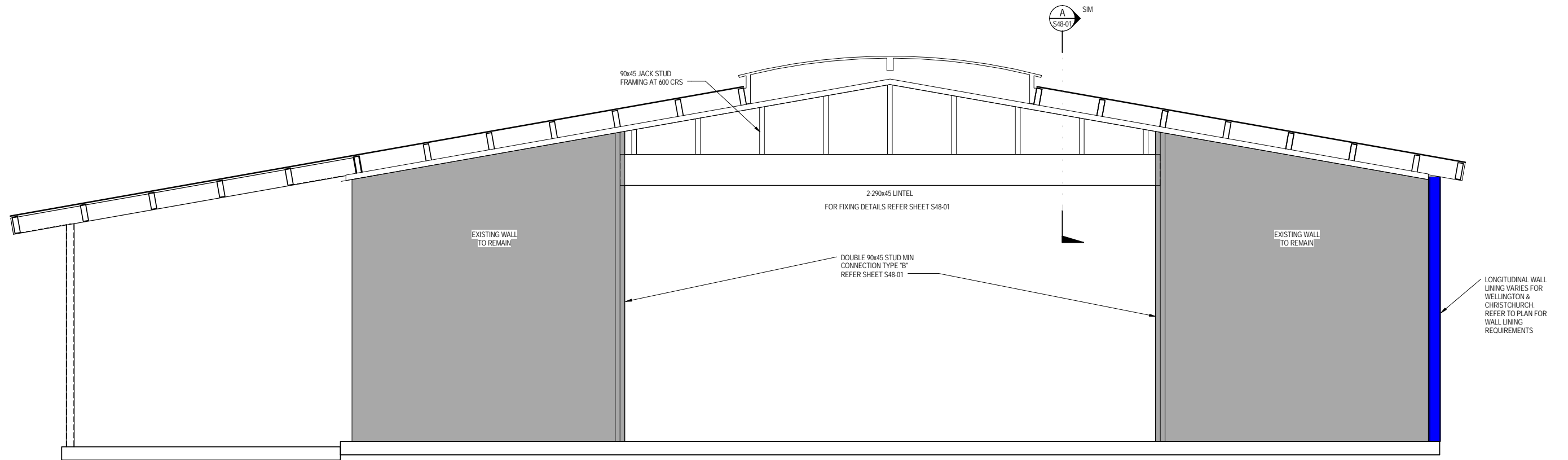
SCALE	SIZE
As indicated	A1
<b>DRAWN</b>	
W.E.NICHOLSON	
<b>DESIGNED</b>	
P.DON	
<b>CHECKED</b>	
C.HECKMANN	

INFORMATION ONLY NOT FOR CONSTRUCTION	
<b>APPROVED</b>	DATE
J. FINNEGAN	20/10/15
J. FINNEGAN	

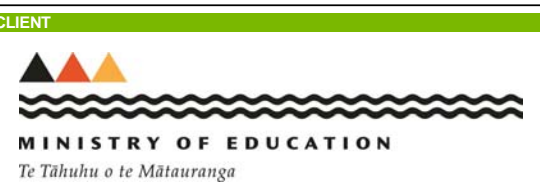
PROJECT	MINISTRY OF EDUCATION FLEXIBLE LEARNING SPACE REFERENCE DESIGNS FOR STANDARD CLASSROOM UPGRADE AUCKLAND, WELLINGTON AND CHRISTCHURCH				
TITLE	FORMULA BLOCK OPTION 3 WELLINGTON, CHRISTCHURCH				
DRAWING No.	PROJECT No.	WBS	TYPE	DISC - NUMBER	REV
246313	-	FORM	-	DRG	-
				S25-71	A



File Path: C:\Users\jfinnegan\Documents\Documents\246313\AUCKLAND\FORMULA BLOCK CENTRAL E.L.E. 2015.smp\mbh0101.rvt



SECTION 01  
1 : 20

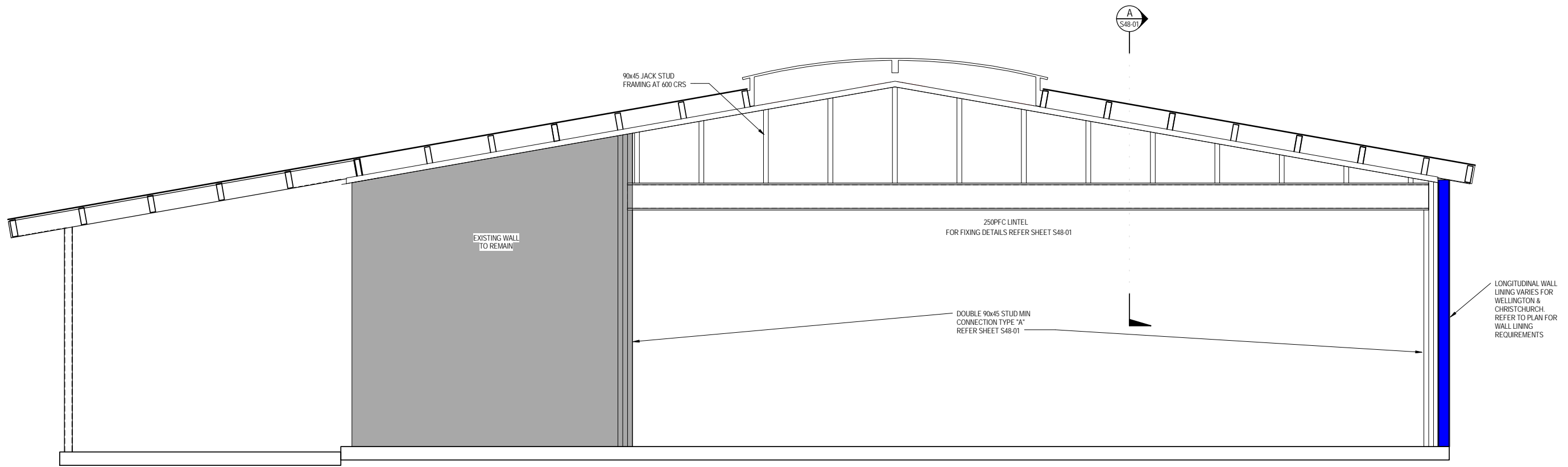


REV	DATE	REVISION DETAILS	APPROVAL
A	29/10/15	FOR INFORMATION	J.FINNEGAN

SCALE	SIZE
1 : 20	A1
<b>DRAWN</b>	
W.E.NICHOLSON	
<b>DESIGNED</b>	
P.DON	
<b>CHECKED</b>	
C.HECKMANN	

INFORMATION ONLY NOT FOR CONSTRUCTION	
<b>APPROVED</b>	DATE
J. FINNEGAN	20/10/15
J. FINNEGAN	

PROJECT	MINISTRY OF EDUCATION FLEXIBLE LEARNING SPACE REFERENCE DESIGNS FOR STANDARD CLASSROOM UPGRADE AUCKLAND, WELLINGTON AND CHRISTCHURCH			
TITLE	FORMULA BLOCK OPTION 1 AUCKLAND			
DRAWING No.	PROJECT No.	WBS	TYPE	DISC - NUMBER
246313	FORM	DRG	S30-01	REV A



SECTION 02  
1:20

File Path: 2012\2012\1631206.n... Office: E:\projec... \C:\Users\j... \Documents\Documents\246313\AUCKLAND\FORMULA BLOCK-CENTRAL-ELE-2015... \pmb\mb\02\014

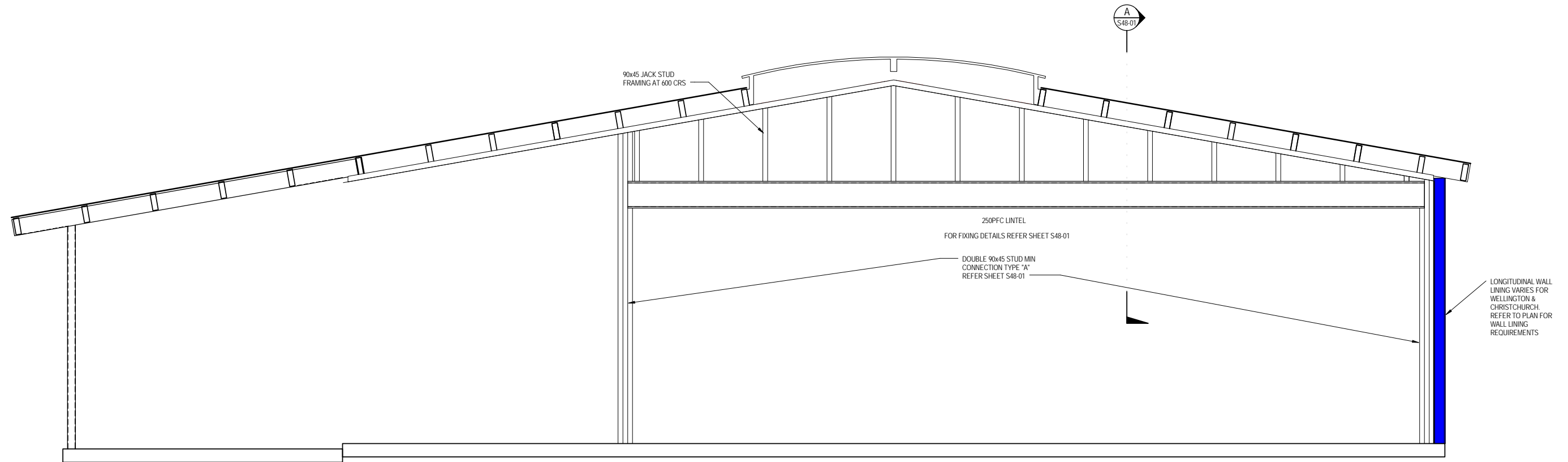
REV	DATE	REVISION DETAILS	APPROVAL
A	29/10/15	FOR INFORMATION	J.FINNEGAN

SCALE	SIZE
1:20	A1
<b>DRAWN</b>	
W.E.NICHOLSON	
<b>DESIGNED</b>	
P.DON	
<b>CHECKED</b>	
C.HECKMANN	

INFORMATION ONLY NOT FOR CONSTRUCTION	
<b>APPROVED</b>	DATE
J. FINNEGAN	20/10/15
J. FINNEGAN	

PROJECT	MINISTRY OF EDUCATION FLEXIBLE LEARNING SPACE REFERENCE DESIGNS FOR STANDARD CLASSROOM UPGRADE AUCKLAND, WELLINGTON AND CHRISTCHURCH			
TITLE	FORMULA BLOCK OPTION 2 AUCKLAND			
DRAWING No.	PROJECT No.	WBS	TYPE	DISC - NUMBER
246313	FORM	DRG	S30-11	REV A

File Path: C:\Users\jfinnegan\Documents\Documents\246313\AUCKLAND\BLOCK CENTRAL E.L.E. 2015\spgmbh0301.rvt



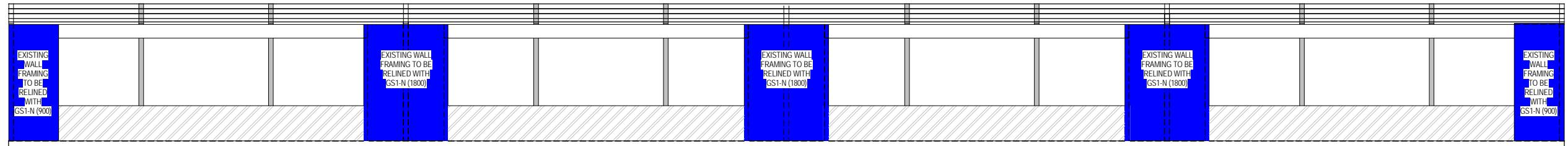
**SECTION 03**  
1 : 20

REV	DATE	REVISION DETAILS	APPROVAL
A	29/10/15	FOR INFORMATION	J.FINNEGAN

SCALE	SIZE
1 : 20	A1
<b>DRAWN</b>	
W.E.NICHOLSON	
<b>DESIGNED</b>	
P.DON	
<b>CHECKED</b>	
C.HECKMANN	

INFORMATION ONLY NOT FOR CONSTRUCTION	
<b>APPROVED</b>	
J. FINNEGAN	DATE 20/10/15
J. FINNEGAN	

PROJECT	MINISTRY OF EDUCATION FLEXIBLE LEARNING SPACE REFERENCE DESIGNS FOR STANDARD CLASSROOM UPGRADE AUCKLAND, WELLINGTON AND CHRISTCHURCH			
TITLE	FORMULA BLOCK OPTION 3 AUCKLAND			
DRAWING No.	PROJECT No.	WBS	TYPE	DISC - NUMBER
246313	-	FORM	- DRG -	S30-21
REV	A			

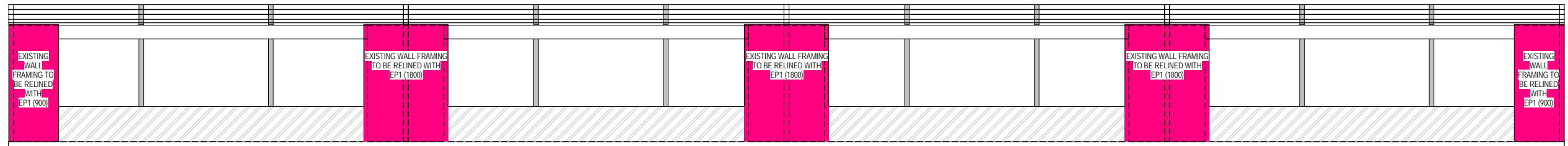


AUCKLAND

1 : 50

10

S25-01



WELLINGTON AND CHRISTCHURCH

1 : 50

11

S25-51

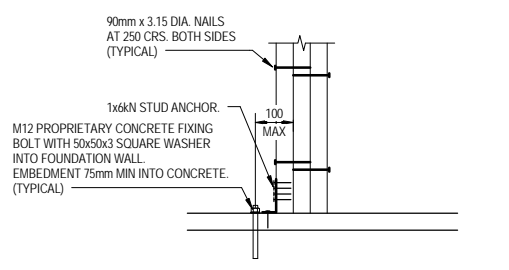
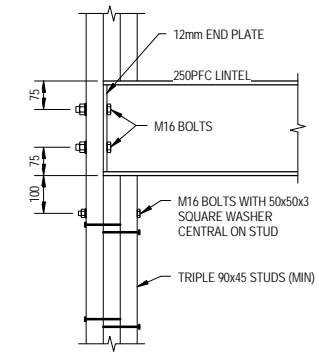
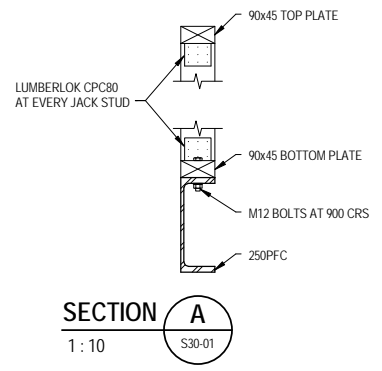
File Path: C:\Users\jhaugh\Documents\Documents\246313\AUCKLAND\BLOCK-CENTRAL-ELE-2015.mxd; Date: 29/10/15 16:33:30; n. O'Rear

REV	DATE	REVISION DETAILS	APPROVAL
A	29/10/15	FOR INFORMATION	J.FINNEGAN

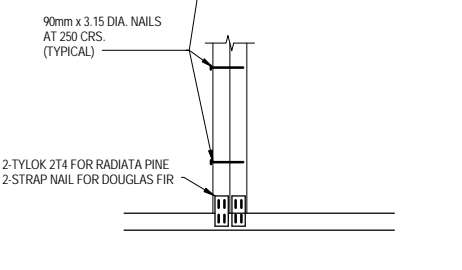
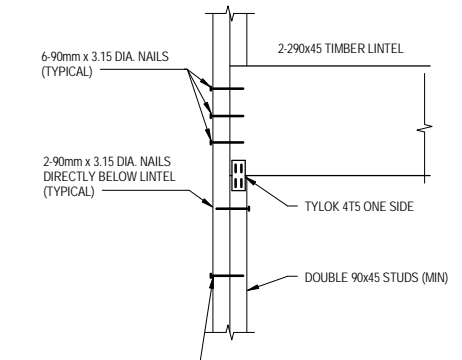
SCALE	SIZE
1 : 50	A1
<b>DRAWN</b>	
W.E.NICHOLSON	
<b>DESIGNED</b>	
P.DON	
<b>CHECKED</b>	
C.HECKMANN	

INFORMATION ONLY NOT FOR CONSTRUCTION	
<b>APPROVED</b>	DATE
J. FINNEGAN	20/10/15
J. FINNEGAN	

PROJECT	MINISTRY OF EDUCATION FLEXIBLE LEARNING SPACE REFERENCE DESIGNS FOR STANDARD CLASSROOM UPGRADE AUCKLAND, WELLINGTON AND CHRISTCHURCH			
TITLE	FORMULA BLOCK TYPICAL ELEVATION			
DRAWING No.	PROJECT No.	WBS	TYPE	DISC - NUMBER
246313	-	FORM	-	DRG - S33-01
REV	A			



PFC LINTEL/TIMBER WALL FRAMING CONNECTION (TYPE "A")



TIMBER LINTEL/TIMBER WALL FRAMING CONNECTION (TYPE "B")

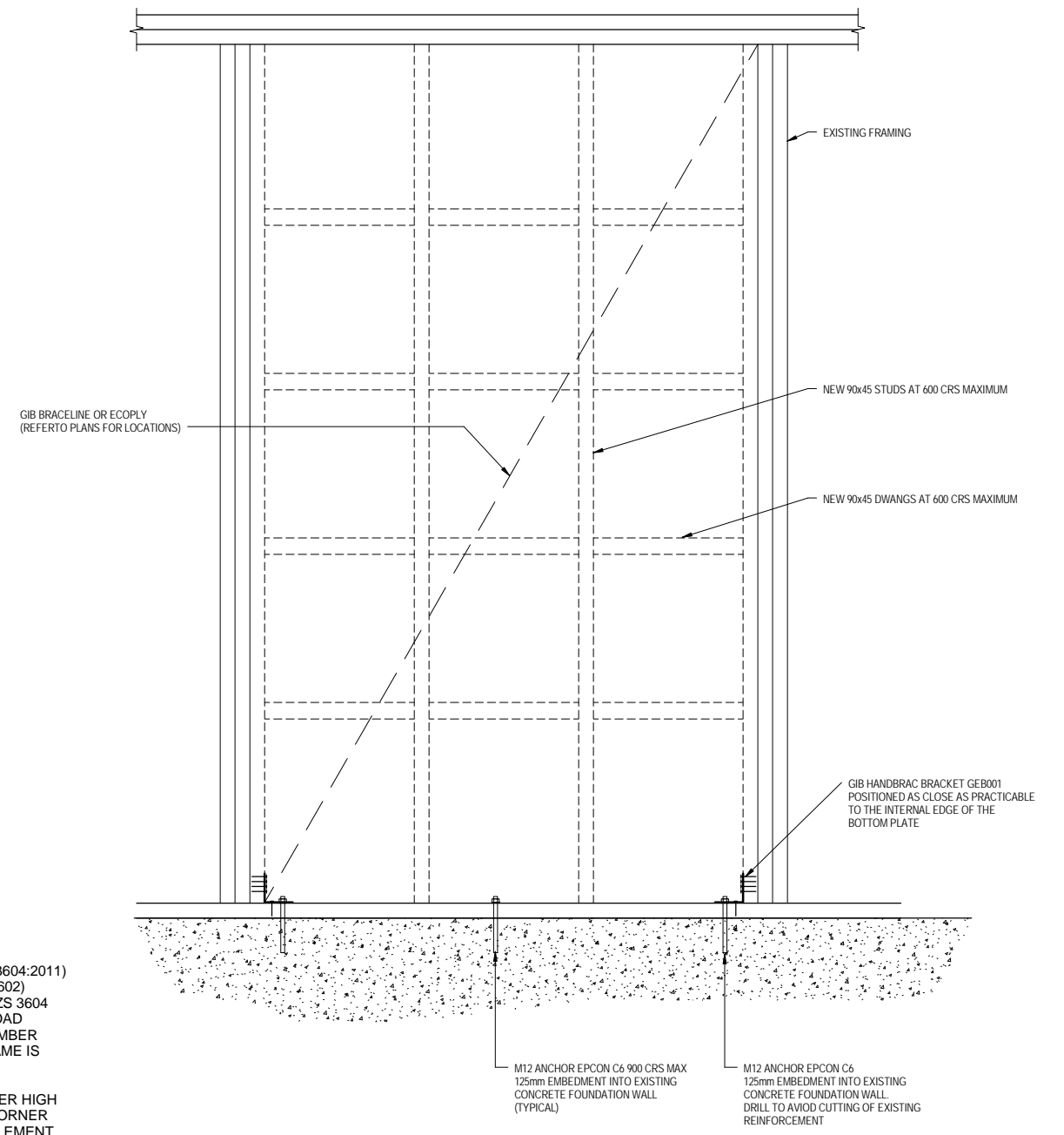
NOTES:

TIMBER FRAMING MUST COMPLY WITH:  
 NZBC B1 STRUCTURES:AS1 CLAUSE 3 TIMBER (NZS 3604:2011)  
 NZBC B2 DURABILITY:AS1 CLAUSE 3.2 TIMBER (NZS3602)  
 FRAMING DIMENSIONS AND HEIGHT ARE AS DETERMINED BY NZS 3604 STUD AND TOP PLATE TABLES FOR LOAD BEARING AND NON LOAD BEARING WALLS. KILN DRIED VERIFIED STRUCTURAL GRADE TIMBER MUST BE USED. MACHINE GRADED TIMBER SUCH AS LASERFRAME IS RECOMMENDED.

FASTEN GIB BRACELINE TO FRAME WITH 35mm X 6g GIB GRABBER HIGH THREADED SCREWS AT 50, 100, 150, 225, 300 mm FROM EACH CORNER AND 150mm CENTRES AROUND PERIMETER OF THE BRACING ELEMENT. FOR VERTICALLY FIXED SHEETS PLACE FASTENERS AT 300 CENTRES TO THE SHEET JOINT.

FIX NEW LINING DIRECTLY TO FRAMING. IF PART OF SHEETS ARE USED ENSURE NAILING AT REQUIRED CENTRES IS CARRIED OUT AROUND THE PERIMETER OF EACH SHEET OR PART SHEET. 2-3mm EXPANSION GAP SHOULD BE LEFT BETWEEN SHEETS.

FASTEN ECOPLY WITH 50x2.8mm GALVANISED OR STAINLESS STEEL FLAT HEAD NAILS. PLACE FASTENERS NO LESS THAN 7mm FROM SHEET EDGE. FASTENERS ARE PLACED AT 150mm CENTRES AROUND THE PERIMETER OF EACH SHEET AND 300mm CENTRES TO INTERMEDIATE STUDS AND DWANGS. WHERE MORE THAN ONE SHEET FORMS PART OF THE BRACE ELEMENT EACH SHEET MUST BE NAILED OFF INDEPENDENTLY.



GIB BL1-H, GIB BLG-H, BLP-H, AND ECOPLY EP1 TYPICAL HOLD DOWN DETAIL

REV	DATE	REVISION DETAILS	APPROVAL	SCALE	SIZE
A	29/10/15	FOR INFORMATION	J.FINNEGAN	As indicated	A1

INFORMATION ONLY NOT FOR CONSTRUCTION	
APPROVED	DATE 20/10/15
J. FINNEGAN	
J. FINNEGAN	

PROJECT	MINISTRY OF EDUCATION FLEXIBLE LEARNING SPACE REFERENCE DESIGNS FOR STANDARD CLASSROOM UPGRADE AUCKLAND, WELLINGTON AND CHRISTCHURCH				
TITLE	FORMULA BLOCK				
DETAILS					
DRAWING No.	PROJECT No.	WBS	TYPE	DISC - NUMBER	REV
246313	FORM	DRG	S48-01	A	