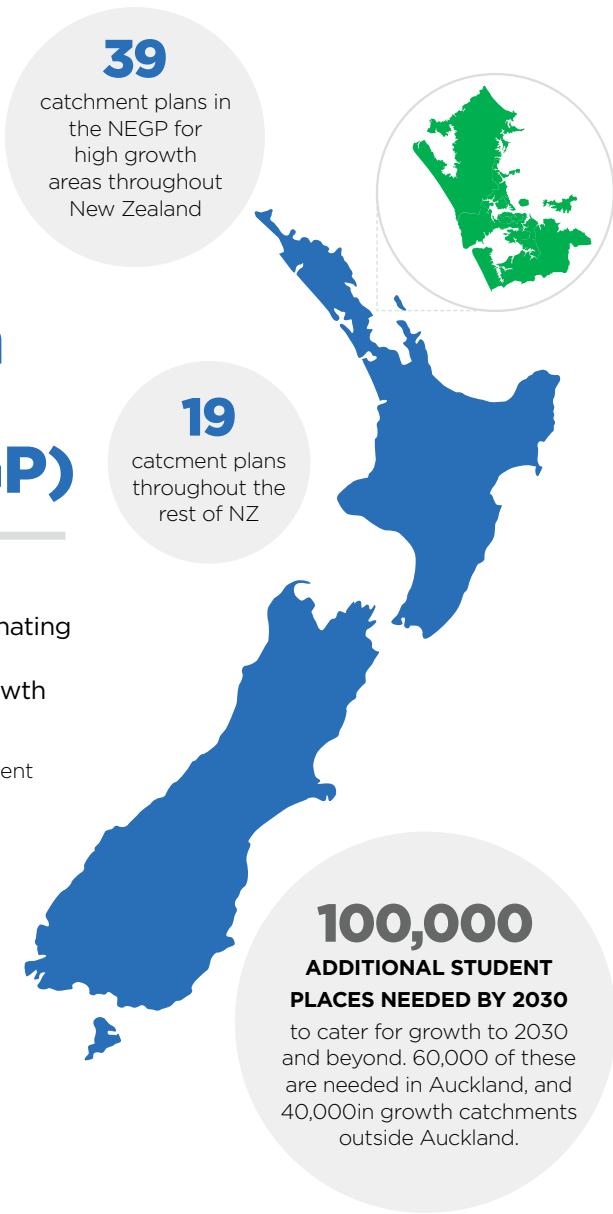


INFO SHEET

# National Education Growth Plan (NEGP)

The NEGP is a new way of thinking about and co-ordinating the Ministry of Education's response to population growth across New Zealand.

The NEGP will ensure that sufficient capacity in the school network is delivered as the right type, in the right place, at the right time.



►► Population growth is placing pressure on our school network in specific areas of the country. These high growth areas are all unique and are experiencing growth in different ways.

►► A new approach is needed to ensure that the educational needs are met for every child in New Zealand.

►► The NEGP is a first for New Zealand and represents a step change in the way we plan for and manage growth in the school aged population. It provides a long term solution to a long term problem.



► **Investment**

Long term investment is required to deliver the NEGP.



► **Planning**

Longer term planning and investment provides the security to plan for the future and the agility to respond to changes in population growth and social change.



► **Solutions**

Catchment plans present strategic solutions for managing education demand in high growth areas to 2030.



► **Funding**

The plans are supported by multi-year funding to meet the demand in the school network.

**Learning support and Māori medium**

There is more work to be done to develop comprehensive national plans for Māori medium education and the provision of specialist schools and associated satellite units.

**Review and monitor**

We will review and monitor demand pressures and planning tools regularly.

**Additional places**

Additional places will be delivered through a mix of managing existing networks and infrastructure, investment in new schools and roll growth teaching spaces at existing schools; and a small amount may be met by using existing capacity.

**Growth plans**

Our growth plans are aligned with and enhanced through partnering with local authorities.

**Continue planning**

For areas across NZ that are not growing and are outside of the NEGP, we will develop catchment plans and continue planning at the local level. We will continue to work directly with school communities as population projections are fluid and subject to change over time.