

## Ministry bulletin for

# SCHOOL LEADERS

## He pitopito kōrero

### Message from Peter Hughes

Just a short note to wish each of you a Happy New Year! I hope that, like me, you had a relaxing break.

It's tempting to say that 2015 will be a big year for education. The reality is that every year is important and the work you do every day as leaders is crucial in making sure all of our kids can do their very best at school.

And I am committed to backing you in that role.

It's a privilege to be here for another year and I look forward to working with you.

### Completing Start-of-Year payroll processing

I know this is a particularly busy time for schools, as you gear up for the start of another school year. One of the many things on your plate is completing the Start-of-Year payroll process.

Everyone working in our schools does important work. We need your help to make sure your staff get paid the right amount at the right time for the important work they do.

If you could, there are three things I need you to do:

- Confirm your Start-of-Year staffing arrangements, including contract start and end dates, changes to employment status, funding, and leave details.
- Review your Pay Ending Report for employee occupancy end dates.
- Check that your administrator has all the information they need and has completed this process.

If you or your administrator need help, you can go to the [Novopay website to access the guide for Start-of-Year processing](#) or give us a ring at the Novopay Service Centre on 0508 668 6729.

Thank you for your help and all the best for the start of your school year.

Cheers  
Peter

## Index

### Critical need to know and action

1. **IES updates** on Communities of Schools, Teacher-led Innovation fund, and Principals Recruitment allowance. [Read more...](#)
2. **Joint Initiative with NZEI**: The Ministry and the NZEI met on Tuesday 27 January, for the first joint initiative governance group meeting, focusing on collaboration, transitions through the education system, and career pathways for teachers and principals. [Terms of reference can be found here](#)
3. We understand there are certain times of the school year when it's not ideal to request you to do things, such as taking part in new initiatives. **As a result, we'd like your views on introducing certain times of the school term where we manage the amount of requests/work that we ask you to do.** [Read more...](#)
4. Invitation to be on regional working party and to share best practice school **Incident preparation and management plans.** [Read more...](#)
5. Fields of Remembrance World War I commemoration packages will be hand-delivered to all schools and kura from 23 February. **Please email us by 18 February with the name of your school**

or kura if you DON'T want to receive one. [Read more...](#)

Kei te toha atu ngā pūhera maumahara o Ngā Papa Whakamaumahara mō te Pakanga Tuatahi o te Ao ki ngā kura katoa o te motu mai i te 23 Hui-tanguru tae noa ki te mutunga o te marama o Poutū-te-Rangi. **Tēnā koa whakamōhio mai ki a mātou o te Te Tāhuhu o te Mātauranga i mua i te 18 o Hui-tanguru ki te kore koe e hiahia te whiwhi tētahi pūhera.** [Pānuitia...](#)

6. **March Roll Return:** List of Student Management Systems (SMS) approved for 2015 roll returns is available on [EducationCounts](#) (Key dates 14 Feb/12 Mar)
7. A new guide will be published on our website on 10 February: **Digital challenges | Prevention and response.** [Read more...](#)
8. Schools' Planning and Reporting information **due 1 March.** [Read more...](#)
9. Literacy and numeracy requirements for NCEA and University entrance update. [Read more...](#)
10. Due to technical issues with the Property Management Information System (PMIS), we will advise the **2014 Notional Lease** for most schools by 6 February via the school/principal's email instead of our website. We will advise the remaining schools when we have clearance from our auditors.

#### Heads up

1. 2015 marks the 175<sup>th</sup> anniversary of the signing of the Treaty of Waitangi. How your school can be involved. [Read more...](#)
2. All teacher time allowance applications for 2014 **must be received by post or email by 5 March 2015** to be processed before the end of the 2014 banking staffing balancing period (pay period 26). [Read more...](#)
3. CYF school referral form change. [Read more...](#)
4. A new online Education sector logon Provisioning Application (EPA) is now available, making it easier for schools to manage Education Sector Logons for their staff. Principals must appoint an 'EPA Authoriser'. [Read more...](#)

5. The Advanced Classroom Expertise Teacher process is open. [Click here for more information](#)
6. **Remember to update ENROL** within 5 days of a student arrival at your school. Most new entrants already have a National Student Number that was assigned to them by an Early Childhood Service.
7. New fact sheet [Māui whakakau, kura whakakau | Teaching and learning environments to support priority learners](#)-other factsheets available [here](#)
8. [Reminder: New attendance code 'G' for term time holidays added to SMSs](#)
9. ESOL funding applications due 2 March. [Read more...](#)
10. [Aspire Scholarships now open](#) (close 24 April)
11. From the beginning of 2015, funding for in-class support will be provided for an initial group of up to 1500 students with special education needs. [Read more...](#)
12. Offer of three-year funding agreements to Specialist Teacher Outreach Service provider schools. [Read more...](#)
13. [Alcohol and Other Drug Education Programmes – guide for schools](#)
14. The second round of the Extraordinary Care Fund **opened 19 January and closes 27 February 2015.** [Read more...](#)
15. [Enter here by 20 March 2015](#) for the Prime Minister's Education Excellence Awards
16. [Updated Youth Guarantee website and Profile Builder](#)
17. Refinement of [Level 1 and 2](#) Vocational Pathways and development of [Level 3 pathways](#)
18. [Check out the new Inclusive Education website](#)
19. Two international studies - PIRLS and PISA involving schools this year. [Read more...](#)
20. The Bulletin has now officially replaced the *Board and Principal Alert* section of the Education Gazette

#### General

1. [Teacher's Aide Resource Funding Information](#)
2. [Occupational Outlook 2015 launched](#)
3. [Cashmere High School finalist in global energy competition](#)

Contact us at: [bulletin@minedu.govt.nz](mailto:bulletin@minedu.govt.nz)

+64 4 463 8919

[www.minedu.govt.nz](http://www.minedu.govt.nz)

4. [Senior Secondary students writing competition - \\$1000 prize \(closes April 30\)](#)
5. [Progress and Consistency Tool \(PaCT\) Presentations](#)
6. [IT Academy Pilot to be extended by a further 10 schools in 2015](#)
7. [The Bank of New Zealand Safer Schools Initiative \(BSSI\)](#)
8. [Links of interest](#)
9. [Alaskan school visit](#)
10. [Don't forget Anzac day has been Mondayised!](#)
11. [Invitation to participate -VLN Primary School](#)

### List of upcoming Ministry communications

[Click here to open the word document](#) (no change since last issue)

### List of education-related websites

[Click here to see 30 education-related websites](#)

### Regional news

#### Tai Tokerau

[Regional update from Hira Gage](#)

#### Auckland

[Regional update from Kevin Emery](#)

#### Waikato

[Regional update from Paula Rawiri](#)

#### Bay of Plenty, Rotorua, Taupo

[Regional update from Ezra Schuster](#)

#### Hawke's Bay, Gisborne

[Regional update from Marilyn Scott](#)

#### Taranaki, Whanganui, Manawatu

[Regional update from Jann Marshall](#)

#### Wellington

[Regional update from Pauline Cleaver](#)

#### Nelson, Marlborough, West Coast

[Regional update from Erika Ross](#)

#### Canterbury

[Regional update from Coralanne Child](#)

#### Otago, Southland

[Regional update from Julie Anderson](#)

### Events

[Click here to see events](#) (1 new event since last issue)

### Newsletters

No new newsletters this issue

---

# Critical need to know and action

## Investing in Educational Success Update

Investing in Educational Success continues to progress, with the first Communities of Schools underway, and an increasing number of schools indicating their interest in joining. Applications are also being received for the Teacher-led Innovation Fund and for the Principals Recruitment Allowance. More information on Community of Schools and for the Expression of Interest form is [available here](#) and more information about the Principal Recruitment Allowance including guidelines and an application form is [on our website](#)

### Teacher-led Innovation Fund

**Applications for the Teacher-led Innovation Fund close at 12pm on 20 February 2015.** [Teachers can still apply for funding for research projects here](#)

The fund is part of the Investing in Educational Success programme and is designed to help teachers come up with and test new ways of raising educational achievement. \$10m

is available over the next four years. Teachers can apply individually but projects must include at least three teachers.

More information on the [Teacher-led Innovation Fund is available here](#) or you can [email us](#)

[Back to top](#)

---

## Calendar of zones

We understand there are certain times of the school year when it's not ideal to request you to do things, such as taking part in new initiatives. As a result, we'd like your views on introducing certain times of the school term where we manage the amount of requests/work that we ask you to do. For example: **Red Zone** = we will keep you informed but won't introduce any new initiatives or ask you to do anything unless it's essential; **Green Zone** = we will keep you informed and may introduce new initiatives and ask you to undertake tasks.

We have talked with a couple of your colleagues to determine what times of the year might work best as Red and Green Zones and [here is a draft calendar showing these](#) We would appreciate your thoughts on this idea including if we've got the zones right. You can feedback via email to [bulletin@minedu.govt.nz](mailto:bulletin@minedu.govt.nz) or you can phone Tania Black on 04 463 8919.

If you are happy with the status quo, please also let us know. We only want to make changes if they add value to you!

Please also let us know if any of the days that we have listed to send out the Bulletin would be best moved to another day.

We will consider all feedback received and update you on what the majority of you think in the next bulletin.

Ngā mihi  
Katrina Casey  
Deputy Secretary, Sector Enablement and Support

[Back to top](#)

---

---

## Incident Preparation and Management

We know that all of you have given thought to and put in place emergency management plans should an adverse incident occur either on your school site or at another site that may mean your school needs to take safety measures eg lock down.

We have been reflecting on the impact of the Ashburton MSD office incident on schools in the area and both the excellent response from schools and some things we could do better. We are also conscious of the variety of incidents that schools are now needing to be prepared for.

We think it's a very opportune time to work with you to revisit existing advice in this area and put together some best practice guidelines for Incident Preparedness and Management – drawing both from your practical experiences and thinking you have done over the years and also taking into account advice from experts and, where appropriate, international best practice for schools.

We will talk to sector bodies about pulling together a working party at the national level but we think this is important enough for each of the 10 Education Directors to run a working party that links in nationally. If you're interested in being on your regional working party and/or you have particularly good plans that you would like to share with your colleagues, can you please let me know by [emailing Sue Wilson](#) or alternatively letting your local Director know. We would like to get underway by late February so it would be great if you can indicate an interest **by Monday 16 February**.

Jim Greening, Group Manager, Schools and Student Support will lead this piece of work but please don't hesitate to contact me if you have any ideas or concerns you would like considered.

Katrina Casey  
Deputy Secretary Sector Enablement & Support

[Back to top](#)

---

## Fields of Remembrance

Fields of Remembrance World War I commemoration packages will be hand-delivered to all schools and kura from 23 February through to the end of March. **Please [email us](#) by 18**

**February if you DON'T want your school or kura to receive one and include the name of your school or kura.**

If we don't hear from you, we'll assume you want to participate.

Each school and kura will receive: 30 white crosses to commemorate the men and women who died in World War I. Guidelines for setting up the Field of Remembrance will be provided.

For further information please read the [Education Gazette story on the Fields](#) and visit our [World War I webpage](#) to find out more.

---

Kei te toha atu ngā pūhera maumahara o Ngā Papa Whakamaumahara mō te Pakanga Tuatahi o te Ao ki ngā kura katoa o te motu mai i te 23 Hui-tanguru tae noa ki te mutunga o te marama o Poutū-te-Rangi. **Tēnā koa whakamōhio mai ki a mātou o te Te Tāhuhu o te Mātauranga i mua i te 18 o Hui-tanguru** ki te kore koe e hiahia te whiwhi tētahi pūhera. **Tēnā koa whakamōhio mai ki a mātou o te Te Tāhuhu o te Mātauranga i mua i te 18 o Hui-tanguru** ki te kore koe e hiahia te whiwhi tētahi pūhera maumahara ki tēnei īmera: [fieldsof.remembrance@minedu.govt.nz](mailto:fieldsof.remembrance@minedu.govt.nz) me te ingoa o tō kura.

Mehemea kāore koe i tuku īmera mai, ka whakaaro mātou kei te ū tonu koe ki te kaupapa nei.

Ka riro ia kura:

E 30 ngā rīpeka mā hei tohu maumahara ki ngā tāne me ngā wāhine i mate atu i te Pakanga Tuatahi o te Ao. E mau hoki ngā aratohu hei ārahi te whakatūria tētahi papa whakamaumahara.

Mō ētahi atu kōrero whānui mō tēnei kaupapa, [pānuitia tēnei](#), haere rānei ki te pae tukutuku [World War I webpage](#) i runga i te pae tukutuku o te kāwana mō te mātauranga.

[Back to top](#)

---

## Digital Challenges | Prevention and Response

A companion to the guidelines for the surrender and retention of property and searches

This new guide will be published on our website on 10 February

With the growing prevalence and functionality of internet capable devices and increasing use in the teaching and learning processes, a raft of challenges are developing in schools.

All schools should be confident about challenging students who have digital devices or items that present a safety risk. The guide will give practical advice to help staff understand their roles and responsibilities, and identifies a range of preventative strategies to encourage safe and responsible use of digital technologies by students.

This guide will also explain the sections of the Education Act 1989 that specifically relate to the management of students' use of digital technology in order to create and maintain a safe and positive learning environment.

It will help schools manage instances where student use digital devices to endanger the emotional safety of any student or detrimentally affects the learning environment, by searching for and confiscating the digital devices containing harmful items and, if warranted, pass them on to the police or other appropriate agencies.

For more information phone Asad Abdullahi DDI +64 4 463 8226 or email:  
[asad.abdullahi@minedu.govt.nz](mailto:asad.abdullahi@minedu.govt.nz)

[Back to top](#)

---

## Schools' planning and reporting reminder – Due 1 March

The following Planning and Reporting information is due by 1 March:

- Charters and Analysis of Variance Reporting
- National Administration Guideline (NAG) 2A reporting of National Standards and Ngā Whanaketanga Rumaki Māori for schools with student in Years 1-8.

[Guidance and resources to help your school can be found here](#)

It is great to see that some schools have already submitted their data and documents - thanks!

## Submission improvements for 2014/15 planning and reporting

We've completed improvements to the School Data portal so schools and kura can now clearly indicate what they're submitting and also see what documents they have submitted. Schools and kura are encouraged to [check their login and password access to the School Data Portal](#), ahead of submission.

[New submission guidelines](#) have been developed to guide you to use the School Data Portal, SMS, and Te Wahaora Ararau to submit 2015 planning and reporting documents. Many schools and kura will be able to use their SMS to extract National Standards data to send through to the Ministry this year. Some SMSs also offer the ability to report and submit National Standards directly to the Ministry from the SMS, or are working towards

this. Vendor names and contact information are available at the link above if you are not sure of how to use your SMS with regards to submitting data.

Ngā Whanaketanga Rumaki Māori reporting for 2014 should be entered into the online tool Te Waharoa Ararau ā-Motu. Guidelines and support videos on how to use Te Waharoa Ararau are provided online and can be accessed from the tool:

<http://twa.vln.school.nz>

If you have any questions about the school planning and reporting process or require any support, please contact your local Ministry senior advisor.

[Back to top](#)

---

## Literacy and numeracy requirements for NCEA and University Entrance

The Literacy and Numeracy requirements for NCEA and University Entrance (UE) have been updated to include Level 2 Te Reo Rangatira achievement standards.

You can view the updated UE Literacy list [here](#) and the updated NCEA Literacy and Numeracy list [here](#). Note that the UE Numeracy and the NCEA Numeracy requirements are the same.

Also, some of the new Te Reo Rangatira achievement standards are excluded against some of the expiring Te Reo Rangatira standards. This means that although credit for all the standards that are achieved will be recorded on the student's Record of Achievement, only one of the mutually excluded standards may be used to meet the requirements of NCEA and other National qualifications.

As set out in the [change report](#) - the following standards are mutually exclusive.

### Impact of changes on [Exclusions List](#)

For transition purposes, the following exclusions will apply for new achievement standards:

Achievement standard (expiring)	Excluded against each of these standards (new)
90442 (2.1)	91777 (2.1)
90751 (2.7)	91785 (2.9)
90752 (2.3)	91779 (2.3)

Information about the new requirements and exclusions has also been published on [Taumata Mātauranga Ā-Motu Ka Taea](#)

[Back to top](#)



Critical need to know and action item 2, 6 and 10 are in full in the index

---

## Heads up

### Treaty of Waitangi 175: Our Past, Our Present; Our Future



The year 2015 marks the 175<sup>th</sup> anniversary of the signing of the Treaty of Waitangi, our nation's founding document. Nationally we recognise this important event on 6 February. Commemorative activities will be happening [throughout 2015](#).

To make it easier for you to find useful teaching and learning resources about the Treaty, we have launched a [new portal](#) where schools can publish their Treaty of Waitangi projects, activities and ideas. You can share what you are doing with others and in turn get some fresh ideas from other schools across the country. Register and upload your project on [the application form](#).

Also, take a look at the [Commemorating Waitangi Day](#) activities that are happening near you. All of them are designed for communities to run and take part in celebrating, commemorating and learning about Waitangi Day and its place in our past, present and future.

The [Treaty of Waitangi 1840 timeline](#) shows that a number of important events happened from February 1840 right through until September of that year. Most centred on discussions and signings of copies of the Treaty. Was the Treaty signed in your area? Check out these [dates of regional significance](#) from across the North and South Islands to find out.

We will update you over the year with more information about activities and work to commemorate Treaty of Waitangi 175.

[Back to top](#)

---

---

## 2014 Teacher Time Allowances Applications

All teacher time allowance applications for 2014 must be received by post or [email](#) by **5 March 2015** to be processed before the end of the 2014 banking staffing balancing period (pay period 26).

Teacher Time Allowances are:

- Beginning Teacher, Second Year Teacher, Overseas Teacher and Retrained
- Specialist Classroom Teacher/ Specialist Teacher (Staffing allowance only)
- Staffing Transfers
- Resource Teachers
- ORS Staffing

**Any 2014 time allowance applications received after this date cannot be actioned.**

Forms can be found [on the Resourcing forms page](#) and emailed to [resourcing@education.govt.nz](mailto:resourcing@education.govt.nz)

[Back to top](#)

---

## School referrals to Child, Youth and Family (CYF)

CYF has recently advised changes to the form used to make referrals in the case of a school having concerns about a child or young person. We have participated with other agencies in the design of the new form to capture more relevant information.

Although the new form has been released, it is not available online as CYFs preference is for education sector professionals to phone them to make referrals (numbers below). This will enable a discussion about the concerns to take place and CYF can then more effectively assess the circumstances. If further action is required, CYF will forward a referral form to the education professional for completion.

Where schools have concerns about a child or young person they should contact ED ASSIST (0508 ED ASSIST, 0508 332 774) which is a dedicated CYF phone line for schools.

[Back to top](#)



The new guidelines, student assessment forms and application forms are available at [Using ELLP for ESOL Funding](#). Old versions of the application forms should not be used.

Please note:

Scores based on the old ESOL/AFs can no longer be used to support the ESOL funding applications.

All returns for the March 2015 (Period 1) allocation must include the English Language Learning Progressions (ELLP) scores for listening, speaking, reading and writing

Updated Status Lists and Application forms can be sent to:

National Migrant and Refugee Education Team  
Ministry of Education  
Private Bag 92644  
Symonds Street  
Auckland 1150

Or emailed to: [info.esol@minedu.govt.nz](mailto:info.esol@minedu.govt.nz)

Once all the information has been entered into the ESOL database (approximately four weeks after the closing date) your school will receive a funding notification letter and the 2015 Period 1 Status List with the details of all students funded for Terms 1 and 2.

Further enquiries

For further ESOL information contact the National Migrant and Refugee Education Team on 0800 800 675 or contact Richard von Sturmer by phone: 09 632 9353 or email: [info.esol@minedu.govt.nz](mailto:info.esol@minedu.govt.nz)

[Back to top](#)

---

## **In-class support funding**

From the beginning of 2015, funding for in-class support will be provided for an initial group of up to 1500 students with special education needs (new funding is available for a total of 4000 students).

The initial 1500 students have been identified as having high learning needs and are currently being supported by the Resource Teachers: Learning and Behaviour (RTLb) service. Students are enrolled in either primary or secondary schools.

The identified students' schools were contacted before the end of 2014 with information about the support. The support provides an allocation of five hours a week of teacher's

aide funding. The funding will be paid directly to the schools using the same process we use for other types of teacher's aide support.

Initially, the allocated support will be for two terms and is additional to any other support these students are receiving.

Further work will be carried out to look at longer-term options to determine how the remaining students will be identified and funding allocated. This work will be undertaken in consultation with education sector groups.

More information about In-class support and the establishment of the working group will be available this month.

[Back to top](#)

---

### **Offer of three-year funding agreements to Specialist Teacher Outreach Service provider schools**

Since 2012, we have been working with schools that provide the Specialist Teacher Outreach Service (Outreach Service) to streamline and simplify how the service is supported and funded.

In 2014, 25 schools were funded to provide this Outreach Service and a further three schools signed up for 2015. The demand from enrolling schools continues to grow. This year established provider schools will be offered three-year service agreements. The three-year agreements are not compulsory - schools can opt to stay with a one-year agreement. All schools who have been a provider for at least a year are considered to be established provider schools. We will be drawing up new service agreements during the early weeks of term one 2015.

The Outreach Service provides a specialist itinerant teaching service for students on the Ongoing Resource Scheme (ORS) who are enrolled in their local schools.

[Back to top](#)

---

### **Extraordinary Care Fund**

The second round of the Extraordinary Care Fund opened **19 January and closes 27 February 2015.**

The Fund is designed to support children who are showing promise in a particular area or experiencing difficulties that are significantly impacting on their development.

People receiving the Orphan's Benefit or Unsupported Child's Benefit are welcome to apply for a grant of up to \$2,000 each financial year (1 July–30 June) for a child in their care. More information is available at [www.workandincome.govt.nz](http://www.workandincome.govt.nz)

Some of the things we were able to provide funding for in the first round included representational sports events and clothing and equipment needed for the trip, music and other types of specialist 1:1 tuition, orthodontic treatment, and technology items such as computers and tablets.

[Back to top](#)

---

## We will be implementing two international research studies this year

### Key dates:

- the PIRLS field trial (the key development activity) will run 16–27 March 2015
- The main study for PIRLS will run 2–27 November 2015
- The main study for PISA will run 27 July – 4 September 2015

The key development activity for the Progress in International Reading Literacy Study (PIRLS) field trial will run in March. Thirty-four schools were selected to participate and were contacted last December.

In November, the main study will involve 198 schools. These schools will be contacted in May.

The Programme for International Student Assessment (PISA) will be implemented in late July through to early September and will involve students from 210 schools. Schools will receive their participation package this month.

[Back to top](#)

---

Heads up items 5, 6, 7, 8, 10, 13, 15, 16, 17, 18 and 20 are in full in the index

---

## General

---

### Teacher's Aide Resource Funding Information: Students verified for Ongoing Resourcing or on the School High Health Needs Fund

Allocation of teacher's aide funding resulting from the 2014 moderation process will be paid into school bank accounts in the 4th week of each term and you will receive a funding letter. Contact our local office with questions or [visit our website](#)

[Back to top](#)

---

### Occupational Outlook 2015 launched

The Ministry of Business, Innovation and Employment Occupation Outlook 2015 report is now available. The Occupation Outlook is designed to be one of the first places young people look when making a decision on career options. It provides a snapshot of 50 key occupations in New Zealand, highlighting the cost of study, income potential and job prospects - a great resource for careers advisors and teachers to inspire study pathways.

A free Occupation Outlook app is also available to download through iTunes and the Google Play Store, making it even easier for students and their families to search and share information. The full report is available on [MBIE's Occupational Outlook](#) page.

[Back to top](#)

---

### Cashmere High School finalist in global energy competition

A team from Christchurch's Cashmere High School were finalists in a prestigious global energy sustainability competition after helping cut electricity usage at their school by almost one-third.

Kim Shannon, head of the Education Infrastructure Service at the Ministry of Education says "The school's energy savings back up what we have found in our energy efficiency programmes, which is that most schools could save up to 40% on their energy costs through simple efficiency measures".

Some energy saving initiatives Cashmere High School implemented over the last couple of years include:

- installing six smart meters to measure the electricity used around the school every 30 minutes and two LCD screens to display real-time results
- a “Switch it off” campaign encouraging students to turn off lights and heating in classrooms when not needed, cutting electricity use by 10% and saving more than \$12,000
- installing energy-efficient LED lights throughout the school.

The two other finalists from the Oceania region included Melbourne Girls’ College and the Lume Rural Training Centre in southern Vanuatu. On 19 January, it was announced that the Zayed Future Energy Prize of \$100,000 was awarded to Melbourne Girls’ College.

[Back to top](#)

---

## Senior Secondary students writing competition - \$1000 prize (closes April 30)

The Royal Australian and New Zealand College of Obstetricians and Gynaecologist are inviting applications for the 2015 *Liam and Frankie Davison Award* for outstanding achievement in literary writing on an issue in women’s health. [Click here for eligibility criteria, application forms and more information.](#)

[Back to top](#)

---

## Progress and Consistency Tool (PaCT) Presentations

Schools interested in using PaCT and want to find out more are invited to attend introductory presentations running in Term 1.

If your school is interested, please [email us](#) and indicate the date and time of the session you would like to attend from the list below:

Location	Date	Time
New Plymouth Devon Hotel, Devon Street East	17 February 2015	10am- 11.30am 11.30am- 1pm 4pm- 5pm
South Auckland Grand Chancellor Auckland Airport, Cnr. Kirkbride & Ascot Roads	18 February 2015	9am- 10.30am 10.30am- noon
Rotorua Novotel Lakeside, Tutanekai Street	19 February 2015	10am- 11.30am 11.30am- 1pm 4pm- 5pm
Wellington	24 February 2015	10am- 11.30am



Brentwood Hotel, 16 Kemp Street Kilbirnie,		11.30am- 1pm 4pm- 5pm
Dunedin Mercure Hotel, 310 Princes St,	25 February 2015	10am- 11.30am 11.30am- 1pm 12.30 pm- 2pm 2pm-3 .30pm
Invercargill Ascot Hotel, cnr Tay Street and Racecourse Road	26 February 2015	10am- 11.30am 11.30am- 1pm 4pm- 5pm

Additional presentations, later in term, will be held in Wellington, Auckland, Masterton, Palmerston North, Whanganui, the Far North, Whangarei, Hamilton, Tauranga, Christchurch, the West Coast, Nelson, Blenheim, Napier and Gisborne. Details will be advised in the Bulletin.

The PaCT helps teachers make dependable judgments on student progress and achievement. It is an online tool with:  
Frameworks that break down mathematics, reading and writing into different aspects, with richly-detailed illustrations of students working on a range of problems and tasks  
An 'engine' that captures teacher judgments and recommends an overall judgment that a teacher can confirm or review

The reading, writing and mathematics version of the PaCT are available in 2015.

[Back to top](#)

---

## IT Academy Pilot to be extended by a further 10 schools in 2015

We selected 10 schools in 2014 to participate in the training and certification programme called the IT Academy.

Students develop digital literacy skills and expertise in software such as Windows, Word, Excel and PowerPoint. Students can sit for industry-recognised certification called Microsoft Office Specialist.

Last year's pilot schools reported that students are being recognised for prior skills and getting a sense of challenge and achievement not apparent in other settings. They also report increased student engagement.

A further 10 schools were selected for the pilot: Burnside High School, Elim Christian College, Hastings Girls High School, James Cook High School, Lindisfarne College, Manurewa High School, Rotorua Lakes High School, Sacred Heart Lower Hutt, Taradale High School and Whangarei Girls College.

An evaluation of the pilot is underway with a report due in July 2015. This will inform our position with respect to ongoing support. Schools are able to self-fund the programme at anytime.

For further information please [email us](#)

[Back to top](#)

---

## The Bank of New Zealand Safer Schools Initiative (BSSI)

Over the next 18 months the BSSI will be rolled out to all schools. The programme provides a tool and support to reduce the likelihood of burglary at schools and the consequent impact of this on educational achievement, teaching and a sense that schools are less safe. More information will be available as the programme rolls out in your area.

We have worked with NZ Police, Bank of NZ, Crimestoppers and SelectaDNA on this initiative and your school will be invited to the nearest programme launch.

[Back to top](#)

---

## Links of interest

[Uruguay school pupils taught English live from London](#)  
[Culture - the fifth language skill](#) and [Making culture happen in the English classroom](#)

[Back to top](#)

---

## Alaskan school visit

14 primary/secondary aged students from Igiugig Village, Alaska are travelling to NZ for a few weeks between December 2015 – February 2016. They intend to visit both islands and are keen to share their Yup'ik (Alaska Native) songs, dance and language and learn about life in NZ. If your school community is interested in meeting and/or billeting these students, please email Renee Grounds: [renee.ivcgrants@gmail.com](mailto:renee.ivcgrants@gmail.com) For information on the students, their school and community, you can visit their blog <http://igischool.blogspot.com/> or their village website [www.igiugig.com](http://www.igiugig.com)

[Back to top](#)

---

## Don't forget Anzac Day has been Mondayised!

To Monday 27 April 2015, as outlined in the [Holidays \(Full Recognition of Waitangi Day and Anzac Day\) Amendment Act 2013](#). For other school terms and holidays [click here](#)

[Back to top](#)

---

## Invitation to participate - VLN Primary school

Expressions of Interest and enrolments are now invited from schools wishing to participate in the VLN Primary School in 2015. The VLN Primary is a collaboration of schools working together to improve educational opportunities for students through online learning. Find out more about the VLN Primary School [at our website](#). A wide range of language programmes are confirmed as available for 2015. In addition will be extension maths, health, and rural & remote schools projects. You can submit [your interest here](#) or contact Rachel at [rachel.roberts@vln.school.nz](mailto:rachel.roberts@vln.school.nz) or 07 3222555

[Back to top](#)

---

## REGIONAL NEWS



### TAI TOKERAU | Hira Gage

Tena koutou katoa

Another year has come around and our teams are well rested and busily preparing for the year ahead. I hope you all managed to take a break and recharge the batteries, ready for 2015.

We went through a period of change within the Ministry last year and are slowly embedding these changes to ensure we provide the best possible support for our schools, centres, whānau and communities.

I look forward to catching up with some of you during this first term.

### Staffing update

I am pleased to introduce **Tim Andersen** as the new student achievement practitioner for Tai Tokerau. Most of you will know Tim as the Special Education District Manager for our area and will be very familiar with his work, particularly focused on inclusive practice and

ensuring all children have the opportunity to participate in and contribute to their school communities. Tim commences his new role on 2 February and will be working alongside our education team.

We are working through a recruitment process to fill the Special Education district manager role for Tai Tokerau. In the interim, **Rose Cameron** will be acting district manager until an appropriate appointment has been made. We are also recruiting a senior adviser (Maori) and student achievement function practitioner (Maori). I will keep you updated on our progress.

### **Request for current contact numbers**

Periodically, we will make contact with board chairs and principals to ensure we have your most up to date contact details. I appreciate being able to call you when there is an urgent matter to discuss or just to give you a call around a particular situation as a 'heads up' or courtesy call, likewise if you need to ring me please do so (027 501 5068).

### **Fields of Remembrance**

2015 will mark the 100 year anniversary of the Battle of Gallipoli and to recognise this important milestone, the Ministry is partnering with the Fields of Remembrance Trust organising curriculum resources and events for schools including setting up Fields of Remembrance, 30 white crosses (the number signifies the number of soldiers in a platoon) to commemorate the brave men and women who sacrificed so much for us. You may have read about this in the [previous Education Gazette](#) or on [our Ministry site](#). We are really proud to be involved with this and if you would like further information please visit our website or give your senior adviser a call.

### **Investing in Educational Success**

The Minister approved the first 11 communities of schools prior to Xmas last year. We continue to receive Expressions of Interest since this announcement was made. At this stage, over 400 schools across the country have registered an interest in discussing IES. We will continue to work with those schools in Tai Tokerau that have expressed an interest in progressing this further.

Ngā mihi  
Hira

[Back to top](#)



## AUCKLAND | Kevin Emery

Happy New Year and welcome back to the school year!

If you're like me the wonderful weather probably made it difficult to shed the shorts, get back into work clothes and get stuck into work. However, with the first term underway, we must get into it!

I have been a Director for six months now and as a newbie to the sector, it has been a steep and enlightening journey so far. I am incredibly impressed with the hard work, dedication and commitment that principals, boards and teaching staff demonstrate in the support of our kids learning and achievement – a view, as a parent, I was not in a position to fully appreciate.

This will be a big year for the Ministry as it continues to re-shape and refocus its efforts to improve the way we support you and your teams to deliver the services you provide to the children and wider school communities you work with. For the next three months, the Auckland team will be focusing on evolving our support model to better meet the needs and expectations you have of us. I am keen to hear your views on what you think this should look like.

We will also be working with schools interested in or already part of a Community of Schools to get them up and running so that the benefits for kids (and teaching staff) can start to flow. My team and I are more than happy to come and talk to principals and/or boards if you want to find out more on what it takes and what it provides.

I would like to thank the principals that hosted me in their schools last year – it was a wonderful insight to the great work being done and the varied ways schools deliver teaching and learning to meet the needs of their particular communities. I intend to spend as much time as I can in schools this year to get a better appreciation of the wider Auckland education story as well as a more comprehensive understanding of the issues and challenges facing schools. This is fundamental for us if we are to support you effectively. I am keen to hear from you (and get an invite).

Please feel free to [email me](#) any time.

There is an Inclusive Practices Programme to support schools use the new NZCER Inclusive Practices Tools - [click here for more information and dates](#)

Kevin

[Back to top](#)



## WAIKATO | Paula Rawiri

Tēnā koutou katoa i tēnei wā o te raumati! Greetings to you at this time of summer!

Welcome back to 2015. I hope that you each got a chance to have some rest and relaxation over the summer break with families and friends and wish you, your staff and students all the very best for the coming year.

### **Our oldest school closes - Waiterimu School**

I would like to acknowledge the closing of Waiterimu School on the 27 January 2015 after 120 years of service to the young people of the community.

I understand in February 1894 two schools were opened, one in the Matahuru Valley, and the other 'in the first dip east of Spencer Hill'. Both schools were of split paling walls and shingle roofs with the Matahuru School having an earthen floor. One teacher spent three days at each school.

In 1923, Waiterimu needed a full time teacher and in 1943 Matahuru closed. The original building on the present site was constructed in the 1930s and replaced later by the present three-classroom school.

The school located northeast of Huntly combined the essential basics and adaptability of water with the solid, useful strength of native rimu. It was a small, rural primary school that catered for students in Years 1 to 8.

Thank you to all of the students, staff and Board of Trustees who have contributed to and supported the school over all this time.

### **Our newest school opens – Endeavour School**

This morning, I was pleased to join with students and staff at our newest school to celebrate the opening of Endeavour School in Hamilton. Congratulations to the Establishment Board of Trustees, Principal Marcus Freke, staff, students and parents for all the hard work you have put into getting your school off to a great start. Kia tūkaha, kia eke – to endeavour, to succeed.

### **6 February 2015 - Marking 175 years since the signing of the Treaty of Waitangi**

You will all be finding your own ways of commemorating this year's celebrations for Waitangi Day. These links to identify [community activities](#) might be helpful for you, as well as resources available through [Te Kete Ipurangi](#). There is a really big effort to try and make it easier for you to access these resources and we'll aim to do our best to link you and your team to them.

Just before Christmas, our whānau received in the mail a special edition of [Te Hookioi](#), the official newsletter of Waikato Tainui, celebrating the 25<sup>th</sup> anniversary since the signing of the Deed of Settlement between Waikato and the Crown for the Waikato Raupatu claim.

There will be many other families throughout our area that received this same booklet and it would be awesome to see these significant milestones and events acknowledged and celebrated as part of your local school curriculum. You can imagine how proud your children will be to see something from home at their school or kura!

### Invitation for New Entrant Teachers

The “Big Day In” on Wednesday 18 March is a great opportunity for **new entrant teachers** and early childhood teachers to enhance their knowledge of early mathematics and early literacy. Teachers who have been involved in MoE funded professional development with ELP (Educational Leadership Project Limited) will share the work that supports strong outcomes for children in these learning areas.

The “Big Day In” will be held at the Hamilton Ministry Office, 19 Home Straight, Te Rapa, Hamilton. For further details visit: [www.elp.co.nz/big\\_day\\_in](http://www.elp.co.nz/big_day_in)

### 2015 MOE Waikato Courses and Workshops for Parents and Educators

[A programme of professional development courses and workshops in Waikato can be found here](#). There are over 20 different courses available. In offering these workshops we hope to promote participation, engagement and achievement by children and young people.

### And finally...

I hope to see many of you over the course of this year. Please do not hesitate to get in contact with me [paula.rawiri@minedu.govt.nz](mailto:paula.rawiri@minedu.govt.nz) if you have a question or would like further information on any matter. On several occasions towards the end of the last year, I talked to local principal groups. This was just great and I’m equally happy to visit you at your school.

Ki roto i ngā manaakitanga  
Paula

[Back to top](#)



### BAY OF PLENTY, ROTORUA, TAUPO | Ezra Schuster

Kia ora and Talofa lava

I hope you have had a well earned rest and break with family and loved ones, making the most of this amazing weather! Some of your students started back last week but for many of you today will be the first day and so all the best for term 1. I have my three children starting this morning at primary school and another starting in term 2 so I can appreciate the excitement (and stress) of students and parents during this time of the year!

2015 looks to be another full year and my team and I look forward to supporting and working alongside you. A critical part of this is that you feel well informed about what is happening across the Ministry and so, please do not hesitate to let me know what you would like to read, know and hear about. I have asked our people especially our senior advisors to keep you better informed and maintain regular contact – always keen to know how this is working and what we can do better. A few updates this fortnight:

### **Communities of Schools**

Like you, I hit the ground running in January, meeting and talking to several groups of principals and Board members about IES and Communities of Schools. We have strong interest across our rohe and Graham Parker [graham.parker@minedu.govt.nz](mailto:graham.parker@minedu.govt.nz), Cheryl Bunker [cheryl.bunker@minedu.govt.nz](mailto:cheryl.bunker@minedu.govt.nz) and I are available to talk or meet with you and your Board to discuss this.

### **Pasifika Power Up in Rotorua!**

Late last year, we were able to secure funding for an exciting initiative to raise Pasifika achievement, **Pasifika Power Up**, and the Rotorua Pacific Islands Charitable Trust will deliver several programmes throughout 2015 across Rotorua. It is the first time Pasifika Power Up has been run out of the main centres, with great success in Auckland, Wellington and Christchurch.

The aim of Pasifika Power Up is to build the capability and knowledge of Pasifika parents, families and communities to better support their children to achieve NCEA and the National Standards, and to see the benefits of enrolling their children into Early Childhood Education services.

The first programme was **Reading is Power**, a three week programme to help students and their families get back into reading after the summer break and get ready for school. It started on Monday 19 January at the Rotorua Library, primarily through word of mouth, and 30 primary aged students registered and attended the programme with parents and caregivers – an amazing effort considering the time of the year and publicity! Here is a link to a story in the local paper: [http://www.nzherald.co.nz/rotorua-daily-post/news/article.cfm?c\\_id=1503438&objectid=11391101](http://www.nzherald.co.nz/rotorua-daily-post/news/article.cfm?c_id=1503438&objectid=11391101)

There are several programmes to Pasifika Power Up including an NCEA programme, ECE and parents fono (forums) and [here is a 2015 calendar of events](#) put together by the Rotorua Pacific Islands Charitable Trust including a Pasifika Fun Day and launch on Saturday 28 February. If you want more information please contact your Senior Advisor or the Pasifika Power Up coordinator Sylvia Tapuke on 021 022 73199.



## Working Smarter

Earlier this month Nicky Hampshire, Special Education Regional Manager (right of picture), Jane Sheward, Special Education District Manager for Bay of Plenty East, and I met with the new Bay of Plenty District Commander, Superintendent Andy McGregor at our Tauranga offices. Superintendent Andy is my equivalent for the NZ Police and we share roughly the same boundaries with a few exceptions.



It was a great opportunity to share our priorities and how we could work smarter as agencies, especially with our most vulnerable families. We have agreed to meet regularly during the year to share what we are doing.

Again, all the best with the start of the term and I look forward to catching up with you soon. If you do want to get hold of me please email me on [ezra.schuster@minedu.govt.nz](mailto:ezra.schuster@minedu.govt.nz)

Have a wonderful week.  
Ezra Schuster

[Back to top](#)



## HAWKE'S BAY, GISBORNE | Marilyn Scott

Happy New Year, everyone! We're really looking forward to 2015 and this is probably a good time to restate our commitment to you:

***We get the job done***

*Ka oti i a mātou ngā mahi*

***We are respectful, we listen, we learn***

*He rōpū manaaki, he rōpū whakarongo, he rōpū  
ako mātou*

***We back ourselves and others to win***

*Ka manawanui ki a mātou me ētahi ake kia  
wikitoria*

***We work together for maximum impact***

*Ka mahi ngātahi mo te tuinga nui tonu*

***Great results are out bottom line***

*Ko ngā huanga tino pai a mātou whāinga mutunga*



### **Communities of Schools**

We have two approved Communities of Schools, with another in the application process. We wish all the very best to each school involved. Working with you and your schools' communities will be one of our priorities for the year.

### **Attendance and Engagement**

Another priority for us will be attendance and engagement. I know it takes precedence every year, but in 2015 we hope to trial some new and different projects. Very soon we will be gathering a group to look at how we can reach our goal of *all children and young people enrolled at, and attending, appropriate schooling* by the end of the year.

### **Prime Minister's Education Excellence Awards**

A reminder that entries for the 2015 awards are now open on the [PM Awards page](#). Entries close on Friday 20 March. Any eligible group, team or partnership can enter and the website has stories from 2014 winners. I know there are some really good things going on in our region so I encourage you to have a look and consider entering.

### **Incredible Years Programme**

#### ***Teachers - Classroom Management***

We are extremely pleased to offer another opportunity for teachers of children aged 3-8 to participate in the Incredible Years Classroom Management Programme in 2015.

Please find further information and enrolment documents below:

- [Incredible Years Teacher Management Training Expression of Interest](#)
- [IYT Programme](#)

The Incredible Years Teaching programme will begin in late February and expressions of interest should be directed to Emma Tring at [emma.tring@minedu.govt.nz](mailto:emma.tring@minedu.govt.nz) or (06) 8691516.

### Parents Evenings

We are also planning to deliver an evening Incredible Years Parent Programme, beginning Wednesday 25<sup>th</sup> February (whakawhanaungatanga hui). The facilitators will be Julie Hathaway and Julie Dawson. Here is the proposed schedule:

### Sessions (6:00pm – 8:30pm)

4, 11, 18 March | 1, 15, 22, 29 April | 6, 13, 20, 27 May | 3, 10, 17 June

[Referral forms for these evenings can be found here](#)

Enquiries into the Incredible Years Parent Evenings can be made to Julie Dawson at [julie.dawson@minedu.govt.nz](mailto:julie.dawson@minedu.govt.nz) or (06) 8691538 or Emma Tring at [emma.tring@minedu.govt.nz](mailto:emma.tring@minedu.govt.nz) or (06) 8691516.

### Gisborne workshop

[Click here to register and find out about our Preventing and responding to suicide workshop](#) being held on Tuesday 17 March from 9am – 12pm.

Please feel free to call me 06 833 6898 or email [Marilyn.scott@minedu.govt.nz](mailto:Marilyn.scott@minedu.govt.nz) any time.

Ngā mihi  
Marilyn

[Back to top](#)



## TARANAKI, WHANGANUI, MANAWATU | Jann Marshall

Kia ora koutou

Happy New Year and welcome back to the start of the academic year! I hope you were able to spend quality time with whānau and have come back ready for the 2015 year. The start of any year is always an exciting and reinvigorating time, as you welcome new colleagues and students into your schools and for teachers meeting their classes for the first time.

Staff in Taranaki, Whanganui, Manawatu are here to support you to make sure that every student in your school achieves to their potential. I am mindful of the challenges that past staffing changes have posed and am pleased to say that there will be minimal change this year. If there is a change we will let you know, otherwise continue to liaise with your existing Senior Advisor or feel free to contact me directly. We are committed to providing both a supportive and responsive service to the education community.

I very much look forward to meeting with you, your board and school community throughout the year.

Please feel free to call me 06 349 6352 or email [jann.marshall@minedu.govt.nz](mailto:jann.marshall@minedu.govt.nz) any time.

Ngā mihi  
Jann

[Back to top](#)



## WELLINGTON | Pauline Cleaver

Welcome to the 2015 school year – I trust you all had a relaxing summer break.

We welcome two new student achievement practitioners to our team, Thomas Tawhiri and Mandy Bird; their priority will be to work with you to continue developing teaching, learning and leadership practises that lift student achievement. Thomas will be working with kura and Māori medium settings. Judy Grose is also part of the team and has been working as a SAF practitioner in Wellington region for the past three years.

The team will be going out to get to know you and your schools and kura over the next term. Our priority is to support schools and kura who are working on achievement challenges that are targeting improved outcomes for Māori and Pasifika students.

If you would like to request SAF support or to meet one of the team, please don't hesitate to let me know or contact them directly. The team:



### **Mandy Bird**

Ko Kahuranaki toku maunga  
Ko Taurekaitai toku awa  
Ko Takitimu toku waka  
Ko Rongomaraeroa toku Marae  
Ko Ngati Kere toku hapuu  
Ko Ngati Kahungunu toku iwi  
Ko Tamatea Arikini te Rangatira  
No Porangahou toku whanau Ropiha  
Ko Mandy Bird toku ingoa. Tena koutou katoa.

I have been in schools as a teacher through to senior leadership since before Tomorrow's Schools, before the Ministry of Education and before Boards of Trustees, so that makes me a relic of the dinosaur era! My most recent positions have been as a principal in three schools in the Ngati Manawa rohe, Murupara.

I am looking forward to the new learning I will get from working in the student achievement function practitioner role across the Lower Hutt, Wairarapa and Tararua regions. I consider this move to be a return home, having attended Masterton Central School and Makoura College before training at Wellington Teachers College. I married Bill Bird (from Ngati Manawa) and we raised two wonderful children in Murupara. I have one mokopuna who is thoroughly spoiled by her doting Nanny Mandy.

No reira, ka nui te mihi kia koutou.



### **Thomas Tawhiri**

Kia ora, I was raised in Ōpōtiki and Wellington. My iwi are Te Whakatōhea, Ngāi Tai, Ngāti Raukawa ki Wharepūhanga and Te Arawa. I have four children. I have been an educator for many years and worked in various roles from a classroom teacher, lecturer, education adviser, reviewer, and education manager. I have also worked in Wānanga and have a passion for Māori education and Te Reo Māori. I will graduate with my master's degree this year with my thesis written in Te Reo Māori.

Please feel free to call me 04 463 8668 or email me at [Pauline.cleaver@minedu.govt.nz](mailto:Pauline.cleaver@minedu.govt.nz)  
Ngā mihi, Pauline

[Back to top](#)



## NELSON, MARLBOROUGH, WEST COAST | Erika Ross

Kia ora tatou and greetings

Welcome back to the new school year. I hope you all had a good break and your children/students have returned fresh and excited about the year ahead. Our team looks forward to working with you again and supporting you and your communities.

### Principals

A very special welcome to all the new and acting principals starting in our area. Please make sure you contact your Senior Advisor if there is anything you need or if we can be of any assistance. We look forward to meeting each of you.

### Our Team

There are no changes to the personnel on the team this year but I have included our profiles, photos and contact details for you again given we have some new principals in the area. I am delighted to confirm that Cat Dempsey has been confirmed as the permanent SAF position for this area. We are really lucky to have Cat and the skills and knowledge she can offer schools.

### Your Senior Advisor

[Here is an updated list showing your senior advisor for this year](#) (and team profiles/school list). Some changes have been made to rationalise travel and to accommodate the four Communities of Schools starting this term and an additional four communities who, if approved, may start later this year.

### Responsiveness and Support

Last year we made it a priority to respond to you in a timely and helpful way. I was pleased to get positive feedback from many of you at the end of last year that indicated we had made progress towards that goal. It will continue to be something we work on and I welcome any feedback that will help us to keep improving our service and support for you. Remember that you can call or email me anytime if you have something you need to discuss. My contact is 03 539 1533, 027 509 0430 or [erika.ross@minedu.govt.nz](mailto:erika.ross@minedu.govt.nz)

### Principals' Association Meetings

I am keen to attend as many principals meetings as possible over the year. It gives me the opportunity to update schools about any new initiatives and to hear from you about your most pressing issues. If you would like me to attend your meetings, please send me the dates and I will make as many of them a priority as I can.

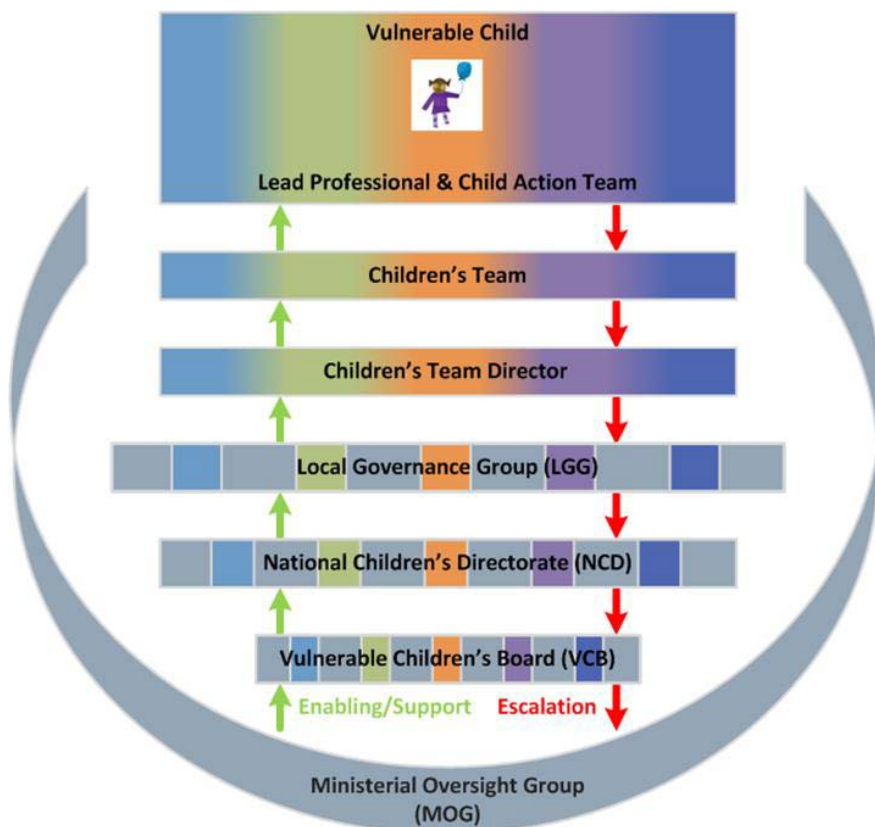
## Marlborough Children’s Team

The Marlborough Children’s Team, which was set up to respond to the needs of at risk children and their families/whānau, went live in November last year. The Director is Dr Lorraine Eades.

The Marlborough Children’s team is a key component of addressing the Children’s Action Plan which sets out a programme of action to change the way we work together to protect vulnerable children by putting them at the centre of everything we do.

A lead professional is appointed to be the one ‘go to’ person for the child and their families/whanau. The lead works with the rest of the team to develop a Child’s Plan that delivers the services appropriate to the needs of that child.

The structure of how the team fits into the Children’s Action Plan highlights the primary focus of improving outcomes for vulnerable children.



[Back to top](#)



## CANTERBURY | Coralanne Child

[Regional update from Coralanne](#)

Feel free to [email me](#) anytime.

[Back to top](#)



## OTAGO, SOUTHLAND | Julie Anderson

Kia ora koutou and warm Pasifika greetings

This is the first Bulletin of the year but I know many of you will have either been back in your office or thinking about the plans ahead over the last few weeks. I hope the holiday break is not a “too distant past” and you are feeling refreshed and ready for the challenges ahead in 2015.

We have been meeting to discuss ways we can collaborate across the Otago /Southland region, and across our range of services to provide a sector responsive team approach. We look forward to engaging with you over the year to discuss how we can best meet your needs.

At the end of last year I hope you received your “one pager” identifying your school’s key Ministry staff and their contact numbers. We look forward to hearing from you should you need our assistance in any way. With the start of year focus, please don’t hesitate to contact your senior advisor, manager of education or myself if we can assist in any way with Charter or Analysis of Variance work.

### **World War I Fields of Remembrance**

During February and early March our staff will be hand delivering a set of 30 white crosses to each school so that you can set up your own Fields of Remembrance in time for Anzac Day 2015. The thirty crosses represent the number of men in a platoon. Each cross can be named with a label provided that represent soldiers from the Otago/Southland region, as well as New Zealand Victoria Cross recipients, the youngest New Zealander who died (aged 17), an All Black captain and one with the word “Known only to God” to represent the unknown soldier. The men and woman whose names have been provided on the labels have research material accessible that can be used to support any school studies linked with Anzac Day celebrations and the setting up of your field.

There is a dedicated page on our [new website](#) for resources and information about World War I or you can visit [www.fieldsofremembrance.org.nz](http://www.fieldsofremembrance.org.nz)



### **Investing in Educational Success (IES)**

We are delighted to have a Community of Schools, based around the Southern Area Schools, approved in our region and we look forward to working with them and their communities to enhance the outcomes for the students in their schools. We welcome ongoing discussions with any interested schools or community groups around any aspects of IES.

I know a number of groups are looking to put in exciting proposals for the use of the Teacher Led Innovation Fund. If you want any support around the nature of this process, please contact us.

### **Supporting a child with ASD in the classroom: 4 March 9am – 3pm**

This is a great chance for teachers who have students who are on the autistic spectrum in their classes to learn about strategies that will support the students. [Find out more here](#)

Best wishes for a great start to 2015 as you welcome staff back to the school and settle the students into their new classes. Please contact me if you wish to discuss any issues or ideas. I look forward to hearing from you.

Ngā mihi

Julie

Email: [julie.anderson@minedu.govt.nz](mailto:julie.anderson@minedu.govt.nz)

Direct Dial: 03 471 5217

Cell phone 027 836 4846

[Back to top](#)

## EVENTS

15-18 FEB 2015 – [Association of International Education Administrators' Annual Conference, Washington DC](#)

04-08 MAR 2015 – [Te Matatini National Kapa Haka Festival 2015, North Hagley Park, Christchurch](#)

18-21 MAR 2015 – [ASB Polyfest, Manukau Sports Bowl, Auckland](#)

14-15 MAR 2015 – [Pasifika Festival 2015, Auckland](#)

23-26 MAR 2015 – [Asia Pacific Association for International Education Conference and Exhibition 2015, Beijing, China](#)

24-27 MAR 2015 – [ActivePost National Secondary School Waka Ama Championships, Tikitapu – Blue Lake, Rotorua](#)

15-17 APR 2015 – [NZ Association for Cooperative Education Inc 2015 Conference, Wellington](#)

30 JUN – 3 JUL 2015 – [New Zealand Principals' Federation Conference, Wellington](#) **New**

09-11 JUN 2015 – [International Enhancement Themes, Glasgow](#)

24-26 JUN 2015 – [6<sup>th</sup> IEA \(International Association for the Evaluation of Educational Achievement\) International Research Conference, Cape Town, South Africa](#)

15-18 SEP 2015 – [European Association for International Education 27<sup>th</sup> Annual Conference, Glasgow](#)

23-26 NOV 2015 – [4<sup>th</sup> International Conference on Language, Education and Diversity, University of Auckland, NZ](#)

[Back to top](#)

## MINISTRY NEWSLETTERS

No new newsletters this issue

[All Ministry Newsletters](#)

[Back to top](#)

## UPCOMING MINISTRY COMMUNICATIONS

[Click here to open the word document of upcoming Ministry information for schools for 2015](#) (no update this issue)

[Back to top](#)

## LIST OF EDUCATION-RELATED WEBSITES

Below is a list of NZ websites you may frequently access. We hope it helps to have them all in one place. If you wish to comment or have any suggestions regarding this item, please email [bulletin@minedu.govt.nz](mailto:bulletin@minedu.govt.nz)

Education agencies

[NZQA](#) | New Zealand Qualifications Authority

[ERO](#) | Education Review Office

Contact us at: [bulletin@minedu.govt.nz](mailto:bulletin@minedu.govt.nz)

+64 4 463 8919

[www.minedu.govt.nz](http://www.minedu.govt.nz)

[ENZ](#) | Education New Zealand

[NZTC](#) | New Zealand Teachers Council

[EDUCANZ](#) | Education Council of Aotearoa NZ

[Careers NZ](#)

[UNESCO](#) | United Nations Education, Scientific and Cultural Organization

Other government education agencies

[NZSTA](#) | New Zealand School Trustees Association

[PPTA](#) | New Zealand Post Primary Teachers' Association

[NZPF](#) | New Zealand Principals' Federation

[SPANZ](#) | Secondary Principal's Association of NZ Inc

[NZEI Te Riu Roa](#) | New Zealand Educational Institute

[NZCER](#) | NZ Council for Educational Research

Ministry of Education websites

[ECE leadership, management and administration](#)

[ECE teaching and learning](#)

[Education Counts](#)

[Education Gazette](#)

[Educational Leaders](#)

[National Student Index](#)

[New Zealand Curriculum](#)

[Novopay Schools Payroll](#)

[Secondary Education Portal](#)

[Shaping Education – Future Direction](#)

[Services for Tertiary Education Organisations](#)

[Study it \(for NCEA students\)](#)

[Te Kete Ipurangi | TKI](#)

[Teaching and Learning Catalogue \(Down the back of the chair\)](#)

[Teach NZ](#)

[WICKED – games and activities to help with learning](#)

[Youth Guarantee and Vocational Pathways](#)

[Back to top](#)

## FEEDBACK

Send us your feedback, comments or questions on any topic in the bulletin or anything else on your mind - to: [bulletin@minedu.govt.nz](mailto:bulletin@minedu.govt.nz)

[Back to top](#)

## CONTACT PETER HUGHES

[Click here to send a message directly to Peter Hughes](#)